

SB Brace Frame
For single-sided walls
up to 8.75 m high



Edition 07 | 2011

PERI GmbH
Formwork Scaffolding Engineering

Rudolf-Diesel-Strasse 19
89264 Weissenhorn
Germany
Tel. +49 (0) 7309.950-0
Fax +49 (0) 7309.951-0
info@peri.com
www.peri.com

Important Notes:

Without exception, all current safety regulations must be observed in those countries where our products are used.

The photos shown in this brochure feature construction sites in progress. For this reason especially safety and anchor details cannot always be considered as conclusive or final. These are subject to the risk assessment carried out by the contractor.

The systems or items shown are not necessarily available in all countries.

Safety instructions and load specifications are to be strictly observed at all times. Separate structural calculations are required for any deviations from the standard design data.

The information contained herein is subject to technical changes in the interests of progress. Errors and typographical mistakes reserved.

Contents

	PERI Brace Frame SB
2	For single-sided walls up to 8.75 m high
4	General, occurring forces
6	Anchoring details
8	Anchoring system DW 15, 20, 26
10	Simple and accurate anchor installation
12	Connecting to formwork systems
16	Pre-assembly, diagonal bracing, crane transport
18	Use as horizontal heavy-duty bracket
20	Additional single-sided wall formwork
22	Components
44	PERI International

SB Brace Frame

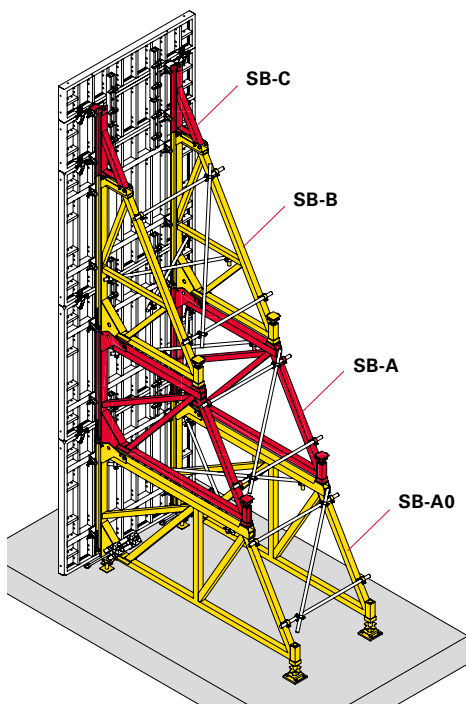
For single-sided walls up to 8.75 m high

PERI Brace Frame SB for single-sided walls up to 8.75 m high

During single-sided concreting, the concrete pressure is transferred into the sub-structure by means of the SB Brace Frame.

The PERI brace frame modular system has been designed for concreting heights up to 8.75 m and a fresh concrete pressure up to a maximum of 60 kN/m².

The SB brace frames can be combined with all PERI wall formwork systems. All units can be quickly connected without any additional components. The required connecting parts are already mounted to each brace frame. All individual components are sized to conform with truck or container dimensions.

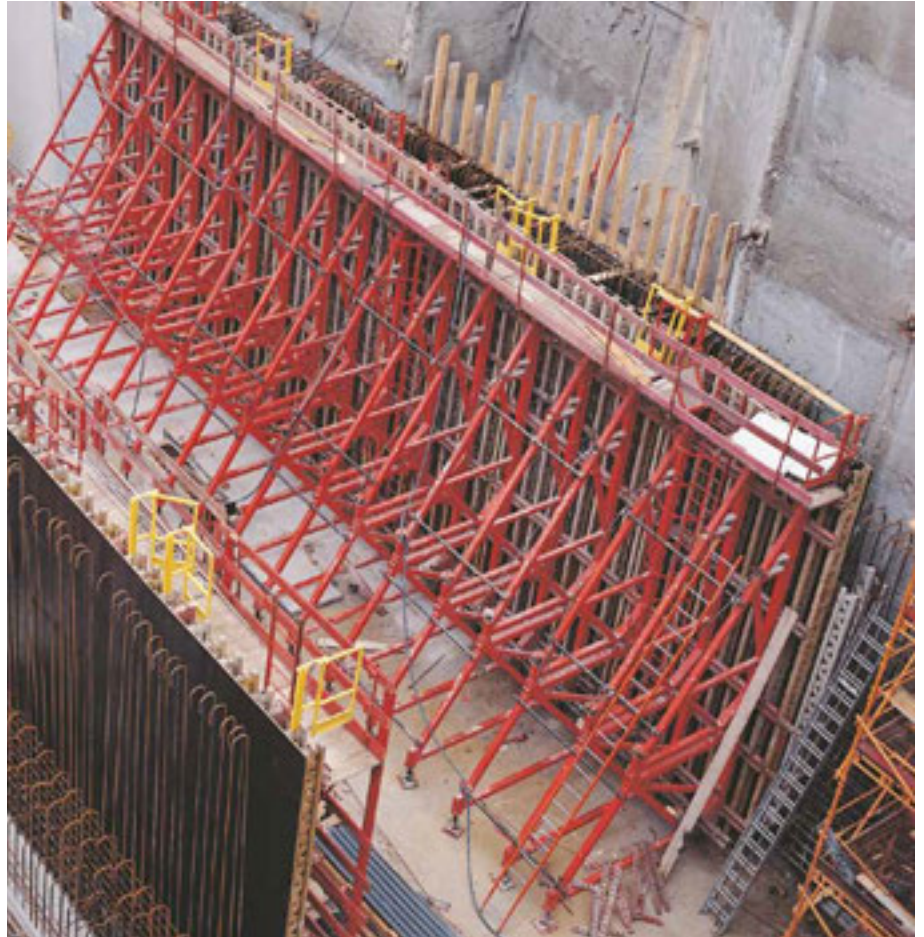


SB-B and SB-C brace frame units with PERI TRIO panel formwork, concreting height 3.50 m.

Concreting heights up to 8.75m using SB-A0, A, B and C brace frames.

The PERI SB brace frames are connected with the MAXIMO, TRIO, DOMINO, VARIO GT 24 and RUNDFLEX wall formwork systems by means of system connection components.

The RUNDFLEX - SB connection is carried out using waler connector and wedge. The same components as for VARIO GT 24.



The brace frames are assembled on the panels lying on the ground. The friction-locked nature of the connection allows them to be lifted as a single unit.

The SB-A0, A, B and C brace frames are designed with a strong IPB profile on the front which allows forces to be transferred through them at any point. This means that the choice of formwork elements for MAXIMO, TRIO and DOMINO or the position of the steel waler with the GT 24 and RUNDFLEX is not important.



Concreting heights up to 6.75 m with B-A, B, C and VARIO GT 24. Complete with working platform and access ladder.

Forces are safely transferred at all connection points of the SB-A0, A, B and C.

SB Brace Frame

General, occurring forces

General

With single-sided concreting against existing walls, rock faces, sheet piling etc., the complete fresh concrete pressure on the formwork area must be transferred into the sub-structure through a brace frame construction complete with corresponding anchorage.

Area of application

The PERI Brace Frame SB is used for single-sided forming (as described above). For this standard application, load tables are available featuring the loads that have to be taken into consideration (see Tables).



Brace Frame SB-B, C
with TRIO, concreting
height 3.90 m.

8.75 m concreting height
with Brace Frame SB-A0,
A, B, C and TRIO.

Ocurring forces

Compressive forces V1 and V2

The transfer of all V1 and V2 compressive forces is normally ensured without any difficulty when the brace frame is used on a concreted bottom slab or foundations.

Tension force Z

For tension anchorage of the forces in the sub-structure, PERI offers different anchor systems.

The decisive factor regarding the choice of anchoring system are the tensile forces which occur.

Attention

If brace frames are positioned on slabs (e.g. underground car parks), V1 and V2 compressive forces must be transferred into the bottom slab or foundations using the appropriate support. On-site checks must be carried out to ensure that V1 and V2 compressive forces are safely transferred into the sub-structure.

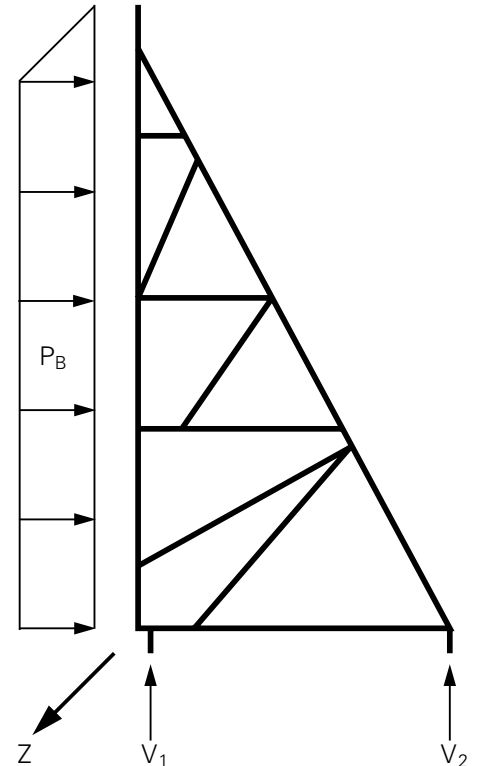


Table of permissible anchor forces

Anchor system	perm. load
DW 15	90 kN
DW 20	150 kN
DW 26	250 kN

Anchoring is always carried out using 2 anchors per brace frame so that, for example, if using the DW 20 system, a maximum tensile force of $2 \times 150 = 300$ kN is allowed.

When using PERI brace frames, the following points in particular are to be taken into consideration:

1. The structural components (e.g. foundations or bottom slab) must be able to accommodate all tensile and compressive forces which arise. Before concreting takes place, the dimensioning of the components is to be checked and provisions made for the positioning of the anchors.
2. Naturally, the "other side" of the single-sided formwork (existing wall, shoring, rock face etc.) must be able to withstand the fresh concrete pressure acting on them.
3. DW tie rods which have been installed for anchoring purposes must not be welded or bent.
4. If other anchor or formwork systems are used, the application possibilities and stability are subject to separate verification.
5. Any deviations from the information contained in this brochure always require separate static proof.

SB Brace Frame

Anchoring details

Brace Frame SB-A0, A, B with Anchor Waler.

Installation of the anchoring system according to pages 8 and 9.

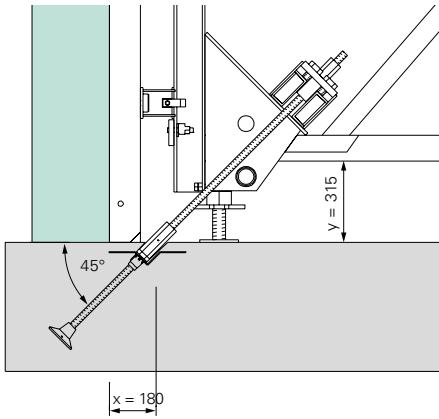
The given dimensions x and y are ideal values. Dimension x lies in an undisturbed area behind the formwork. Conversely, if dimension x is changed, dimension y must be altered by the same value.

If x is larger, y must be smaller – if x is smaller, y must be larger.

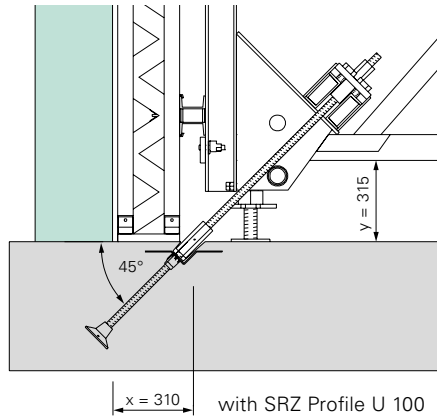
Note

If dimension x is made smaller, anchoring takes place in the area of the formwork.

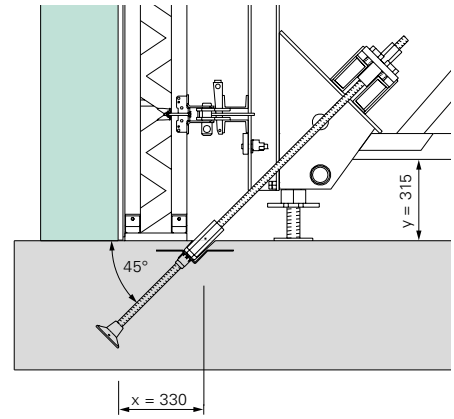
MAXIMO, TRIO, DOMINO



VARIO GT 24



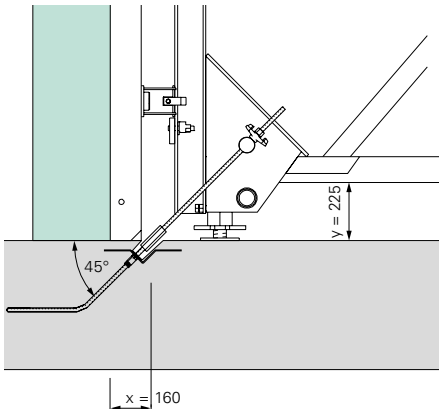
RUNDFLEX



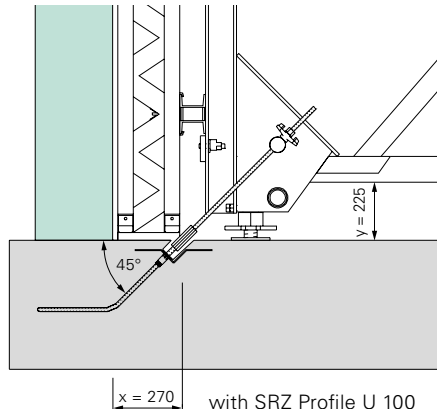
Brace Frame SB-B with Double Tie Yoke

Installation of the anchoring system DW 15 according to page 8.

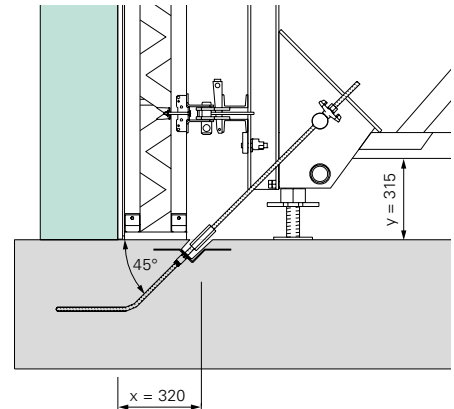
MAXIMO, TRIO, DOMINO



VARIO GT 24



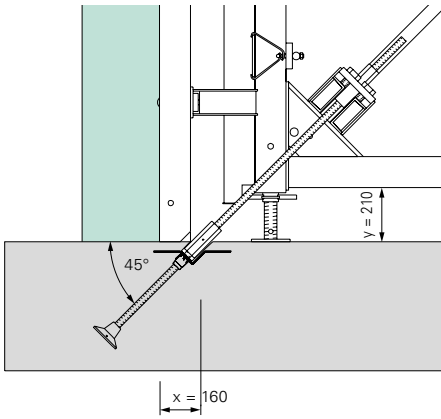
RUNDFLEX



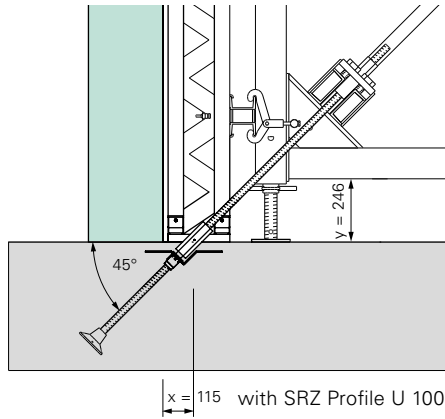
**Brace Frame SB-2
with Anchor Waler.**

Installation of the anchoring system according to pages 8 and 9.

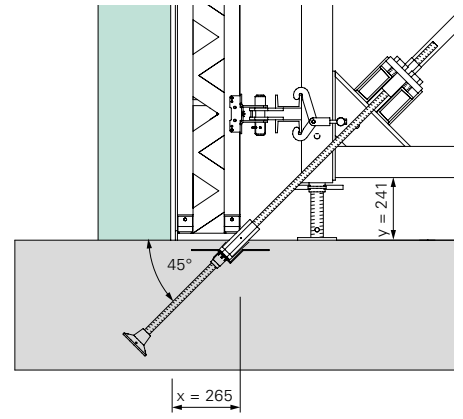
MAXIMO, TRIO, DOMINO



VARIO GT 24



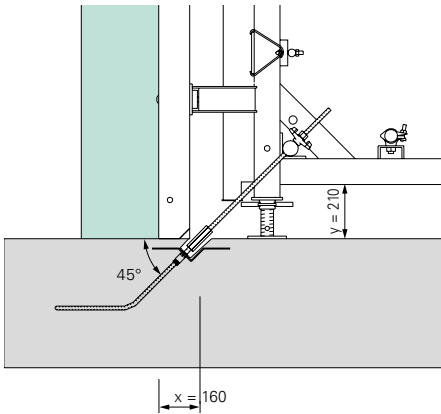
RUNDFLEX



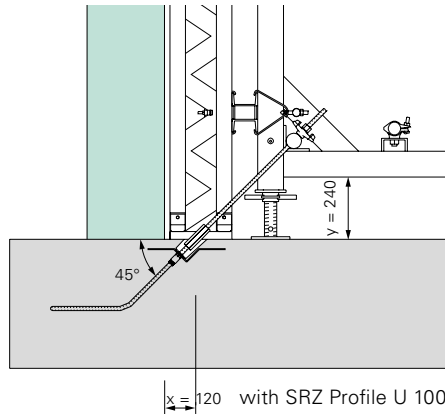
**Brace Frame SB-1
with Double Tie Yoke or
Anchor Waler.**

Installation of the anchoring system DW 15 according to page 8.

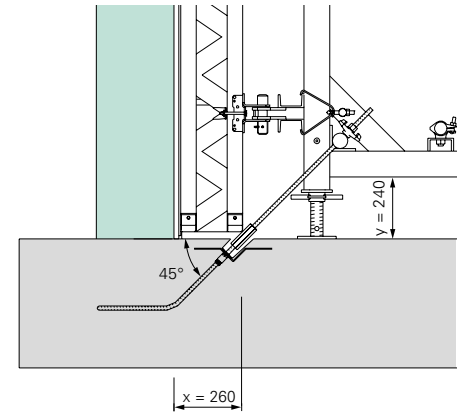
MAXIMO, TRIO, DOMINO



VARIO GT 24



RUNDFLEX



SB Brace Frame

Anchor system DW 15, 20, 26

The choice of anchoring system is determined by the tension force **Z** applied on the brace frame.

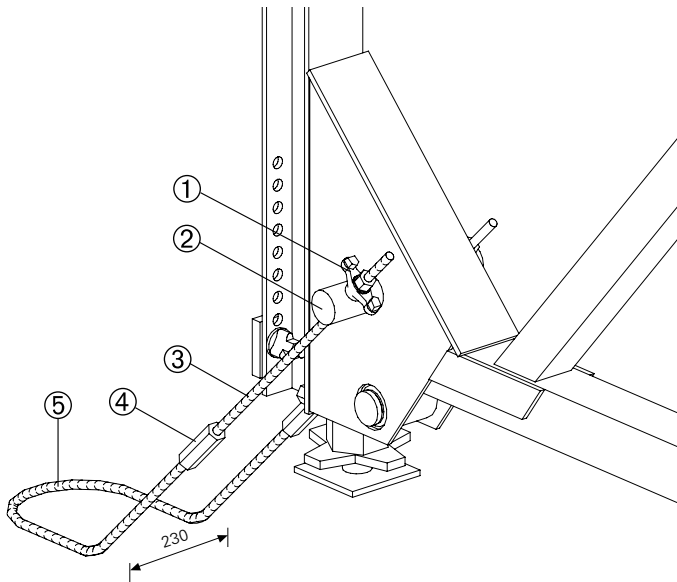
(see Tables)

Note:

Separate statical proof is required for anchoring systems other than those shown here.

Anchoring of DW 15 with Double Tie Yoke.

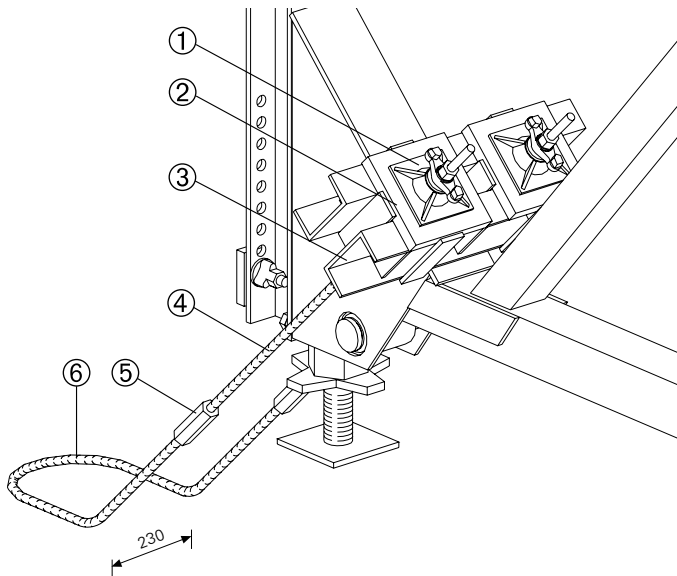
Permissible tension force $2 \times 90 \text{ kN} = 180 \text{ kN}$



Reusable anchor parts	Lost anchor parts
<p>1. Wingnut DW 15 Item no. 030100</p> <p>2. Double Tie Yoke Item no. 027520</p> <p>3. Tie Rod DW 15 Item no. 030030</p> <p>4. Hex. Nut DW 15, SW 30/108 Item no. 030090</p>	<p>5. Brace Frame Double Anchor DW 15 Item no. 030060</p>

Anchoring of DW 15 with Anchor Waler.

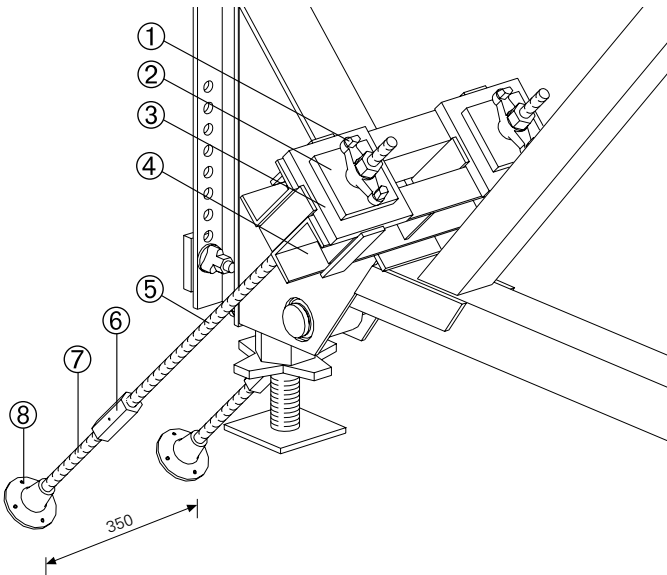
Permissible tension force $2 \times 90 \text{ kN} = 180 \text{ kN}$



<p>1. Wingnut Pivot Plate DW 15 Item no. 030370</p> <p>2. Anchor Plate SB DW 26 Item no. 027480</p> <p>3. Anchor Waler U 140, 0.55 m Item no. 027650 or Anchor Waler U 140, 2.35 m Item no. 027530</p> <p>4. Tie Rod DW 15 Item no. 030030</p> <p>5. Hex. Nut DW 15, SW 30/108 Item no. 030090</p>	<p>6. Brace Frame Double Anchor DW 15 Item no. 030060</p>
--	--

Anchor system DW 20

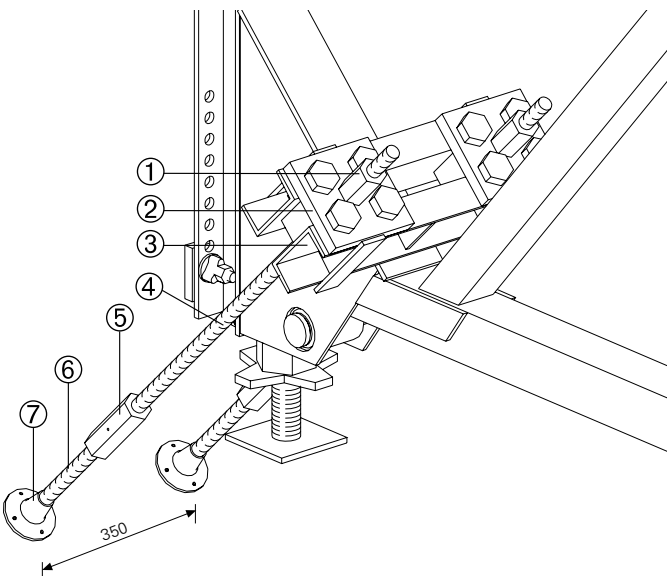
Permissible tension force $2 \times 150 \text{ kN} = 300 \text{ kN}$



Reusable anchor parts	Lost anchor parts
<p>1. Wingnut DW 20 Item no. 030990</p> <p>2. Counterplate DW 20 120 x 120 x 20 Item no. 030830</p> <p>3. Anchor Plate SB DW 26 Item no. 027480</p> <p>4. Anchor Waler U 160, 0.55 m Item no. 109017</p> <p>5. Tie Rod DW 20 Item no. 030700</p> <p>6. Hex. Nut DW 20, SW 36/110 Item no. 030590</p>	<p>7. Tie Rod DW 20 Item no. 030700</p> <p>8. Threaded Anchor Plate 20 Item no. 030860</p>

Anchor system DW 26

Permissible tension force $2 \times 250 \text{ kN} = 500 \text{ kN}$



<p>1. Hex. Nut DW 26, SW 46/80 Item no. 030970</p> <p>2. Tension Release Plate SB DW 26 Item no. 101621</p> <p>3. Anchor Waler U 160, 0.55 m Item no. 109017</p> <p>4. Tie Rod DW 26 Item no. 030340</p> <p>5. Hex. Nut DW 26, SW 46/150 Item no. 030980</p>	<p>6. Tie Rod DW 26 Item no. 030340</p> <p>7. Threaded Anchor Plate 26 Item no. 030870</p>
---	--

SB Brace Frame

Simple and accurate anchor installation

Anchor installation

With the PERI V-shaped tie holder and leading anchor coupler, accurate assembly of the tension anchor at an angle less than 45° is possible. This guarantees a safe transfer of loads resulting in increased stability for brace frame and formwork.

The economical advantages of the PERI tension anchorage with V-shaped tie holder and leading coupler are:

- less on-site coupling nut requirements
- no cutting of tie rods required
- reusable tie rods

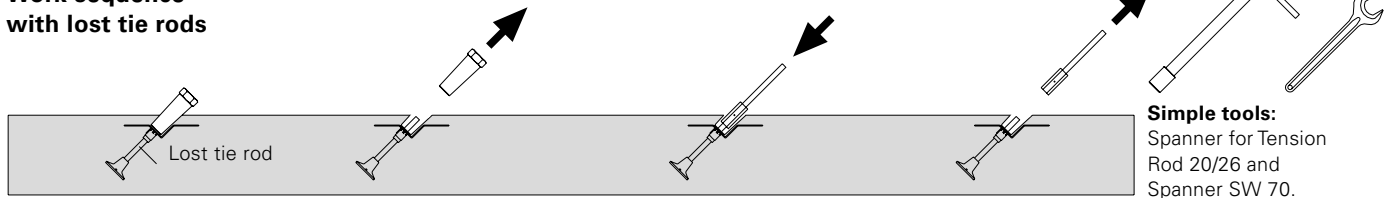


Easy and simple fixing of the anchoring to the reinforcement ...



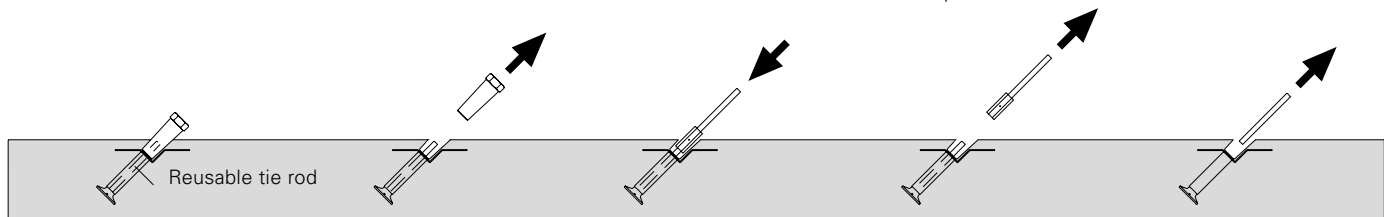
... and easy dismantling of the leading anchor coupler.

Work sequence with lost tie rods



1. Installation of tie with V-shaped tie holder and leading coupler.
2. Dismantling of the leading anchor coupler with the SW 70 spanner.
3. Tightening of the coupling nut and tension rod.
4. After concreting, remove tension rod and coupling nut, then fill remaining hole.

Work sequence with reusable tie rods



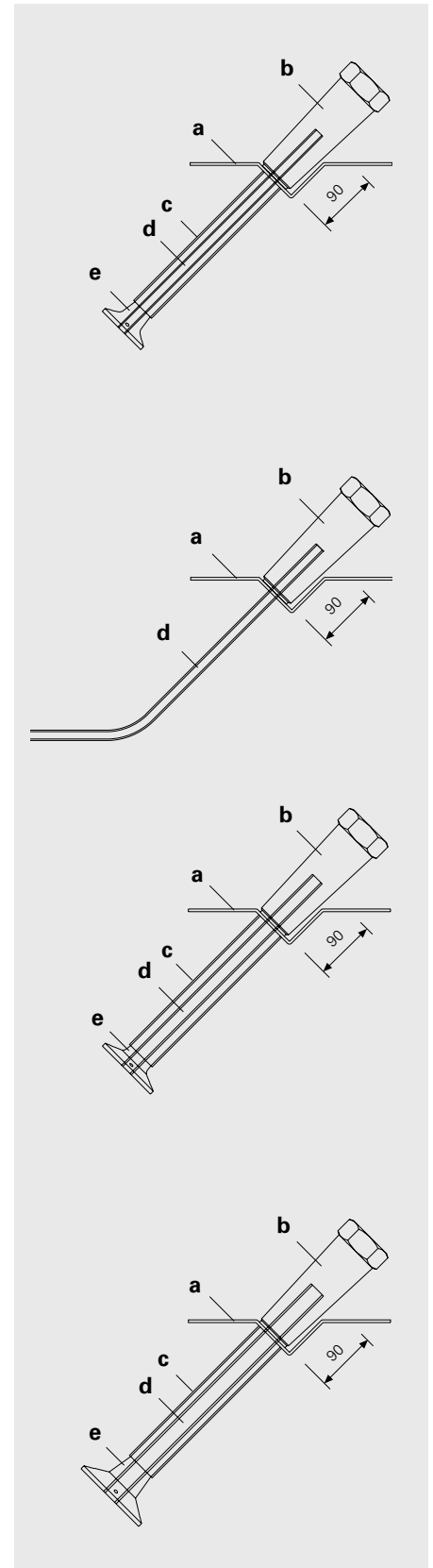
1. Installation of tie with V-shaped tie holder and leading coupler.
2. Dismantling of the leading anchor coupler with the SW 70 spanner.
3. Tightening of the coupling nut and tension rod.
4. After concreting, remove tension rod and coupling nut.
5. Tie rod is screwed out using Spanner for Tension Rod 20/26. Fill remaining hole.

Com- ponent	Item no.	Name	Reusable
DW 15 with Tie Rod DW 15			
a	031580	V-Tie Holder DW 15	
b	031631	Leading Anchor Coupler DW 15	X
c	031627	Tube rough 32, L = 3.0 m	
d	030030	Tie Rod DW 15, special length	X
e	030840	Threaded Anchor Plate DW 15	
Components when using a brace frame			
	030090	Hex. Nut DW 15 SW 30/108	X
	030030	Tie Rod DW 15, special length	X

DW 15 with Brace Frame Double Anchor DW 15			
a	031580	V-Tie Holder DW 15	
b	031631	Leading Anchor Coupler 15	X
d	030060	Brace Frame Double Anchor DW 15	
Components when using a brace frame			
	030090	Hex. Nut DW 15 SW 30/108	X
	030030	Tie Rod DW 15, special length	X

DW 20 with Tie Rod DW 20			
a	031590	V-Tie Holder DW 20	
b	031632	Leading Anchor Coupler 20	X
c	031634	Tube rough 42, L = 3.0 m	
d	030700	Tie Rod DW 20, special length	X
e	030860	Threaded Anchor Plate DW 20	
Components when using a brace frame			
	030590	Hex. Nut DW 20 SW 36/110	X
	030700	Tie Rod DW 20, special length	X

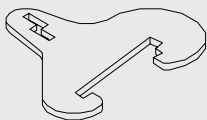
DW 26 with Tie Rod DW 26			
a	031600	V-Tie Holder DW 26	
b	031633	Leading Anchor Coupler DW 26	X
c	031634	Tube rough 42, L = 3.0 m	
d	030340	Tie Rod DW 26, special length	X
e	030870	Threaded Anchor Plate DW 26	
Components when using a brace frame			
	030980	Hex. Nut DW 26 SW 46/150	X
	030340	Tie Rod DW 26, special length	X



Brace Frame SB-A0, A, B, C

Connecting to formwork systems

Waler Connector SB-A, B, C
Item no. 025760

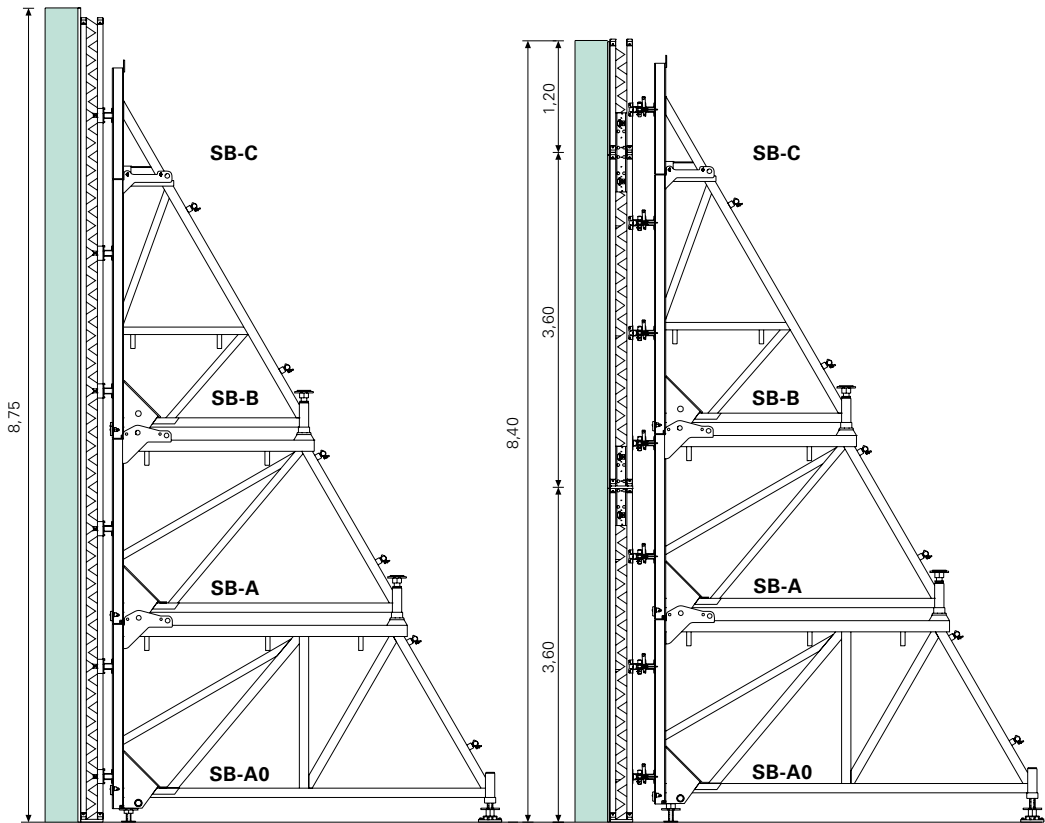


Wedge K, galv.
Item no. 024250



VARIO GT 24
h = 8.75 m

RUNDFLEX
h = 8.40 m

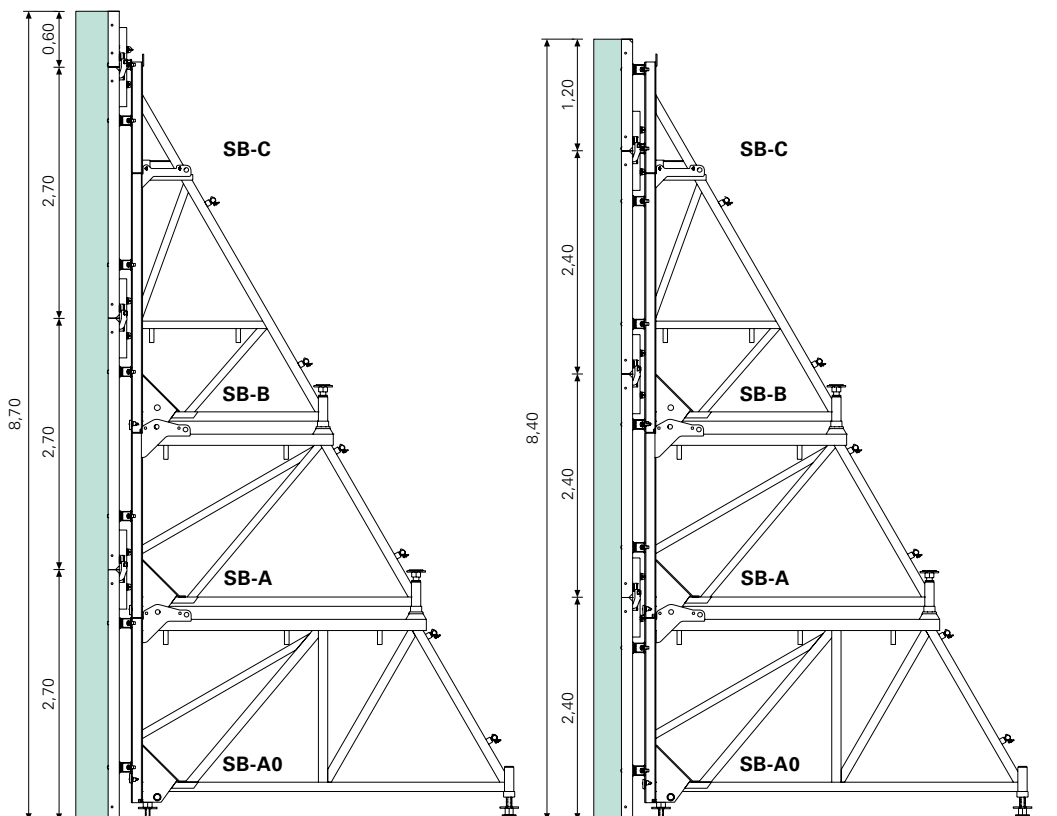


Brace Frame Stützbock SB-A0, A, B, C up to 8.75 m high



MAXIMO, TRIO panels, vertical
h = 8.70 m

MAXIMO, TRIO panels, horizontal
h = 8.40 m



Safety instructions

The support (connection) of the panel must always take place at the point where the tie is installed during normal operations (double-faced). Otherwise the static system of the formwork panel is altered which can

lead to large deformations and, in extreme cases, breakage.

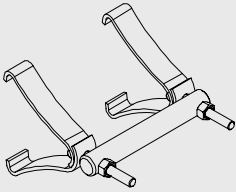
If extending the formwork, the specifications provided by PERI for each respective system must be taken into consideration.

Brace Frame SB-1, SB-2

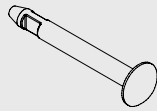
Connecting to formwork systems

SB-1 up to 3.60 m high

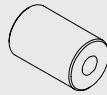
Hook Strap for SB-1, 2
Item no. 027590



Pin SB-MAXIMO
Item no. 113255

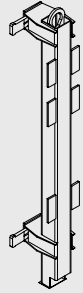
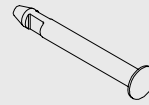


Sleeve SB-MAXIMO
Item no. 114107

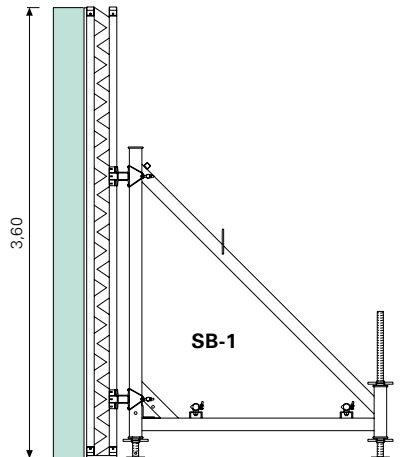


Adapter SB-1, 2 – MAXIMO/TRIO/DOMINO

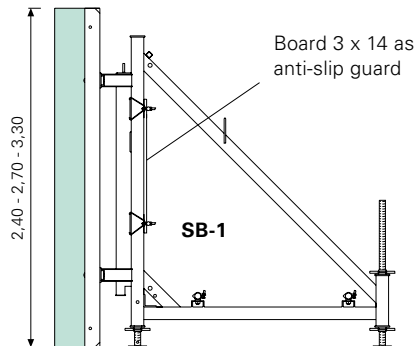
Item no. 027680
Pin SB Ø 19 x 165
Item no. 027690



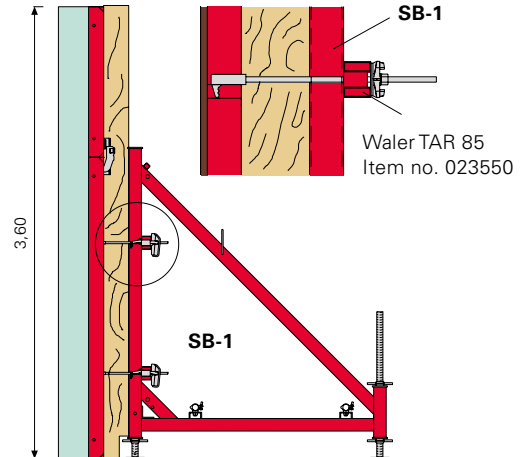
VARIO GT 24
h = 3.60 m



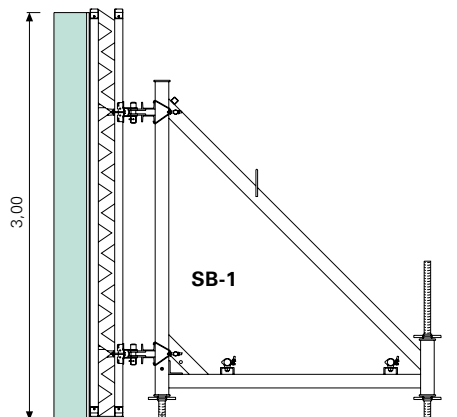
MAXIMO, TRIO
h = 2.40 m, 2.70 m or 3.30 m



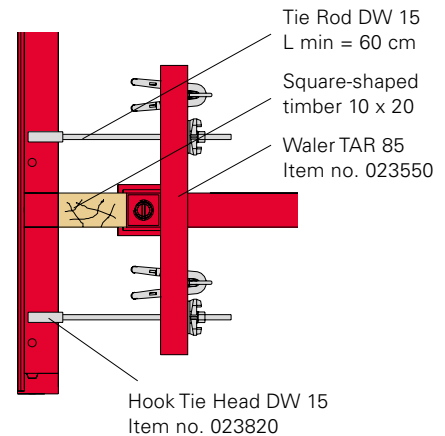
MAXIMO, TRIO
h = 3.60 m



RUNDFLEX
h = 3.00 m



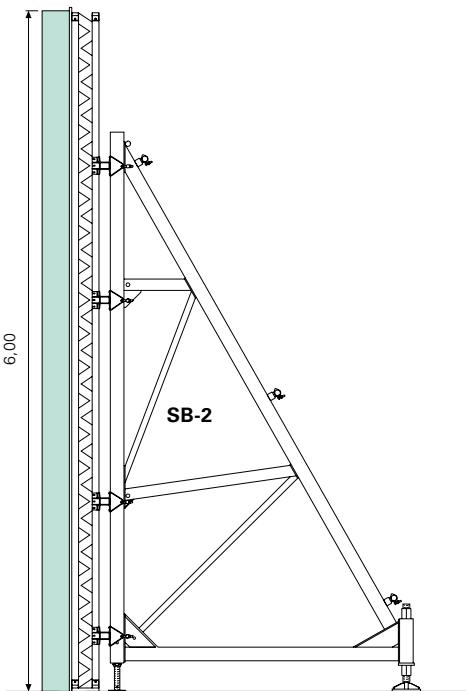
Brace Frame Connector details



SB-2 up to 6.00 m high

VARIO GT 24

h = 6.00 m



Safety instructions

The support (connection) of the panel must always take place at the point where the tie is installed during normal operations (double-faced). Otherwise the static system of the formwork panel is altered which can lead to large deformations and, in extreme cases, breakage.

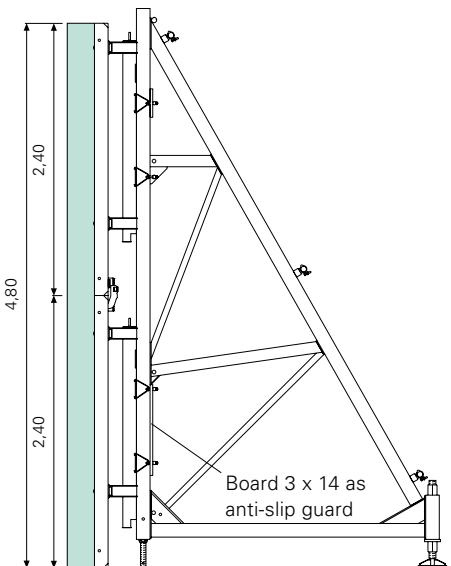
If extending the formwork, the specifications provided by PERI for each respective system must be taken into consideration.

MAXIMO, TRIO

h = 6.00 m

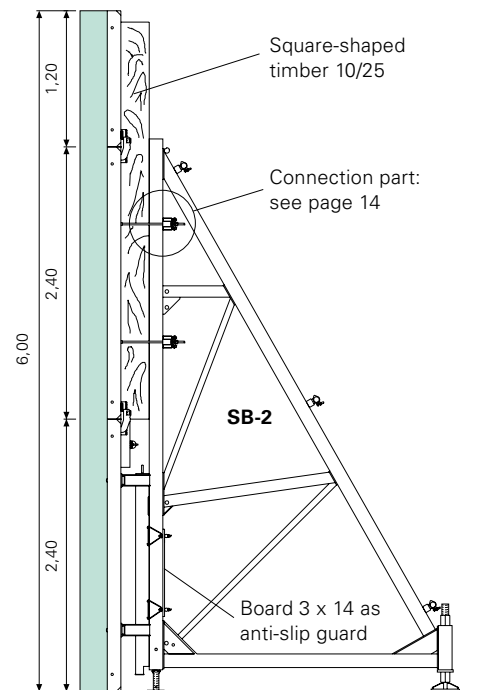
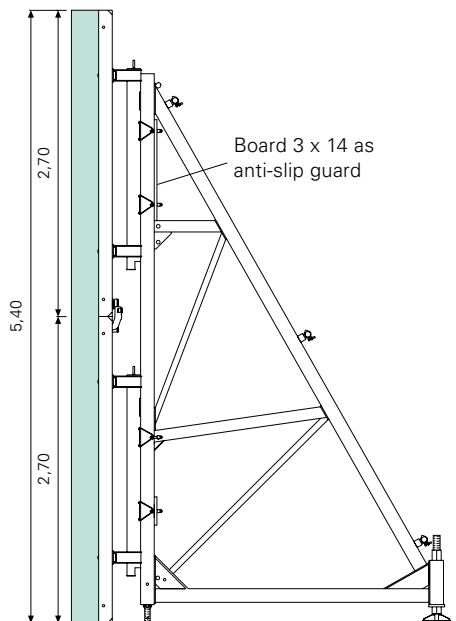
MAXIMO, TRIO

h = 4.80 m



MAXIMO, TRIO

h = 5.40 m



SB Brace Frame

Pre-assembly, diagonal bracing, crane transport

Pre-assembly

Assembly of the Brace Frame SB with the formwork element takes place in an appropriate manner on the horizontally-positioned panel. For the required connection components, please take into consideration pages 12 to 15 as well as the component overview. A crane is always required for assembly purposes.



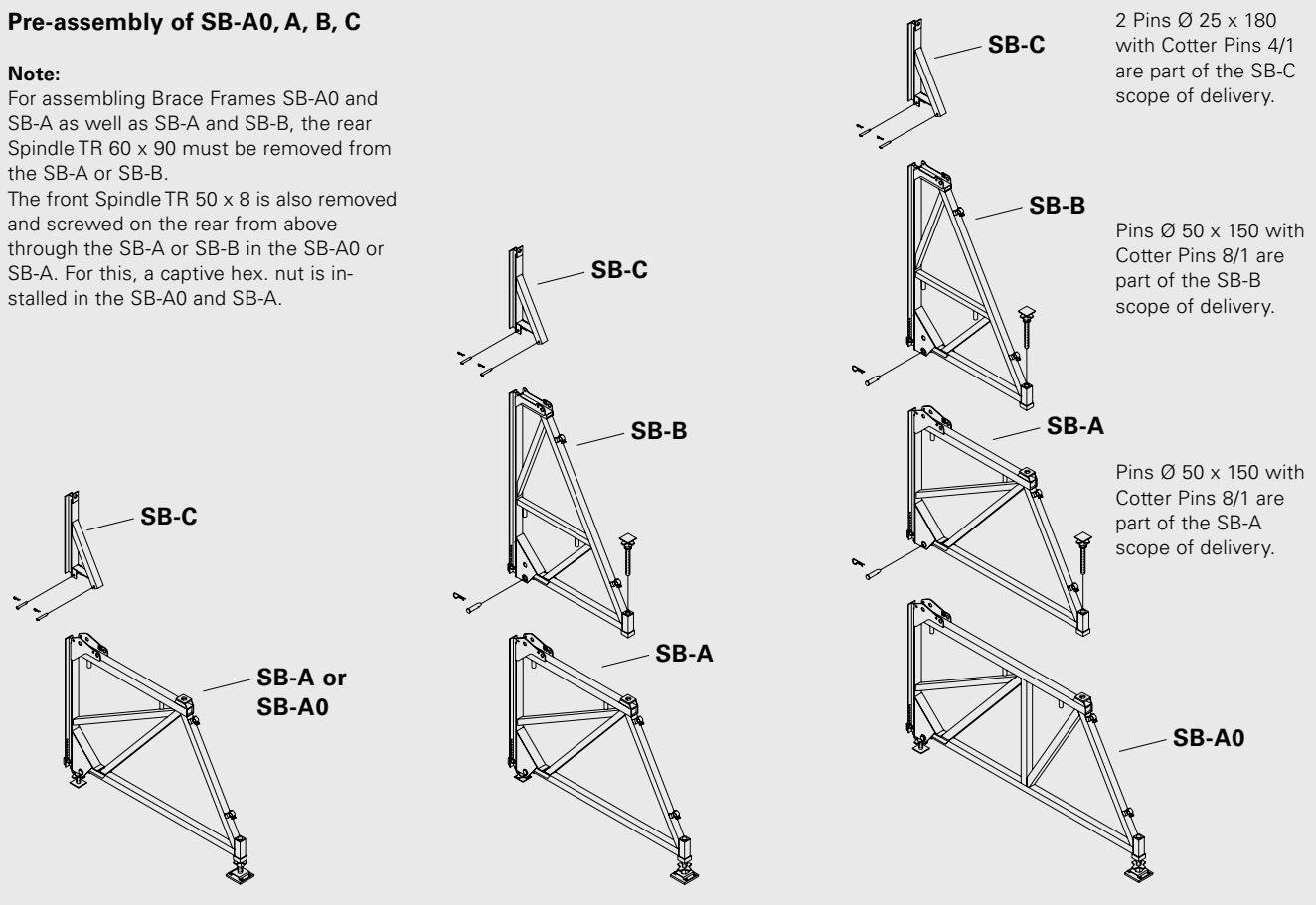
Assembly of Brace Frames SB-A, B and c on horizontal TRIO elements.

Pre-assembly of SB-A0, A, B, C

Note:

For assembling Brace Frames SB-A0 and SB-A as well as SB-A and SB-B, the rear Spindle TR 60 x 90 must be removed from the SB-A or SB-B.

The front Spindle TR 50 x 8 is also removed and screwed on the rear from above through the SB-A or SB-B in the SB-A0 or SB-A. For this, a captive hex. nut is installed in the SB-A0 and SB-A.

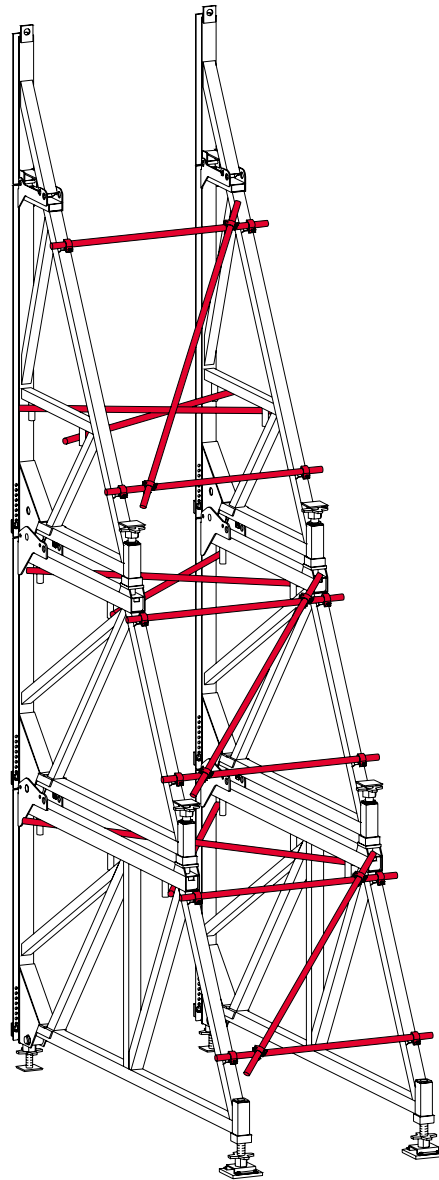


Diagonal bracing

For the required diagonal bracing, Scaffold Tubes $\varnothing 48.3 \times 3.2$ as well as Swivel Couplers 48/48 mm are used.

Possible diagonal bracing on Brace Frames SB-A0, A, B, C

For the SB-A0, A, B and C, the required diagonal bracing is specified in the design tables.



Crane transport

Safety instructions

For transporting movable units by crane, always use the designated suspension points on the brace frame and never exceed the maximum load-bearing capacity (see Components). The crane must never be used to release the panel from the concrete!

Table for easy weight determination of Brace Frames SB-A0, A, B, C and SB-1 and 2 movable units.

*Units consist of 2 brace frames including diagonal bracing without anchorage. The formwork can be assumed in simplified terms with 60 kg/m^2 . This weight must be included in the respective unit.

Unit	Weight/Unit*
SB-A0	850 kg
SB-A	650 kg
SB-B	550 kg
SB-A, C	750 kg
SB-A, B	1200 kg
SB-B, C	650 kg
SB-A, B, C	1300 kg
SB-A0, A, B, C	2100 kg
SB-1	310 kg
SB-2	780 kg

SB Brace Frame

Use as horizontal heavy-duty bracket

The PERI SB Brace Frame can also be used as a heavy-duty bracket. This application allows the erection of large working platforms (< 8.75 m) whilst simultaneously accommodating high shear forces.



The spacing and number of brace frame sections are determined through the existing load.

The large shear and tensile forces are transferred into the concrete by means of the building authority-approved PERI Climbing Cone-2 M36/DW 26.



The anchoring systems for horizontal applications have official building authority approval.

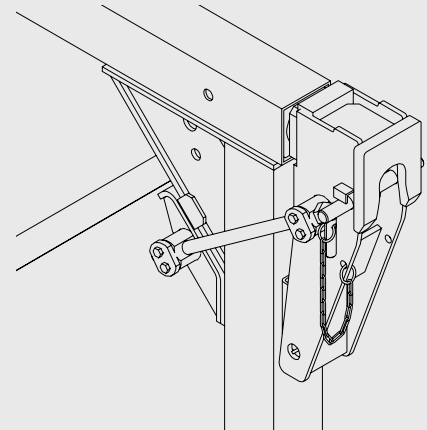
Two variants are available:

1. Double-suspension with Brace Frame Mounting Shoe SB Double

For the SB-A0, A and B systems. The permissible shear force for the Brace Frame Mounting Shoe-2 is 200 kN.

2. Single-suspension with Brace Frame Mounting Shoe SB

For SB-2, SB-A0, A and B brace frames. The permissible shear force for the Brace Frame Mounting Shoe is 120 kN.



Installation with SB-2
With Brace Frame Mounting Shoe and Brace Frame Adapter SB-2.

Installation with SB-A0, A and B
With Brace Frame Mounting Shoe-2.



Using SB-A and B brace frame systems as working platform and heavy-duty brackets.

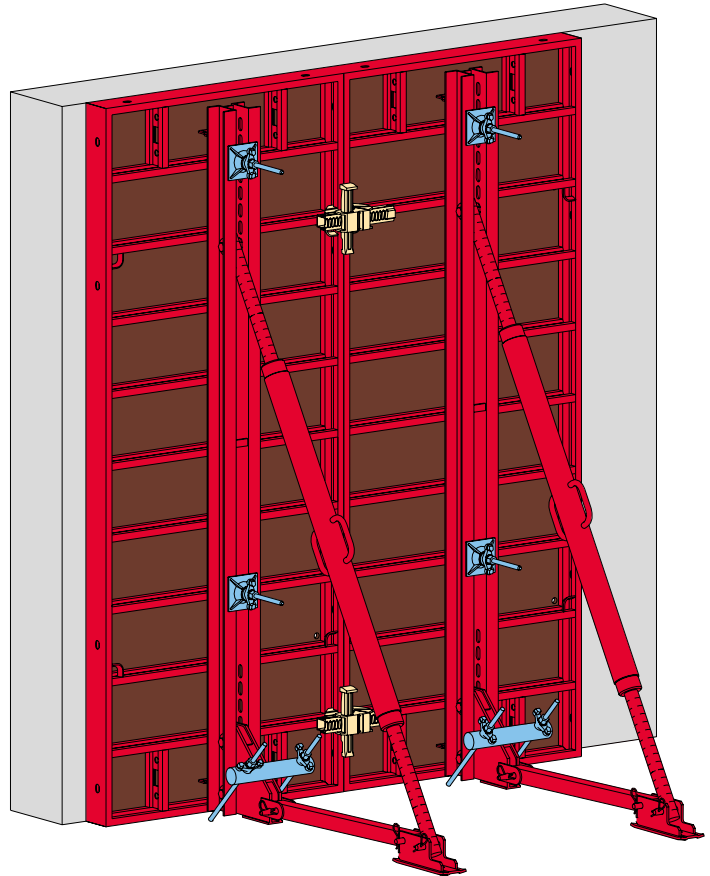
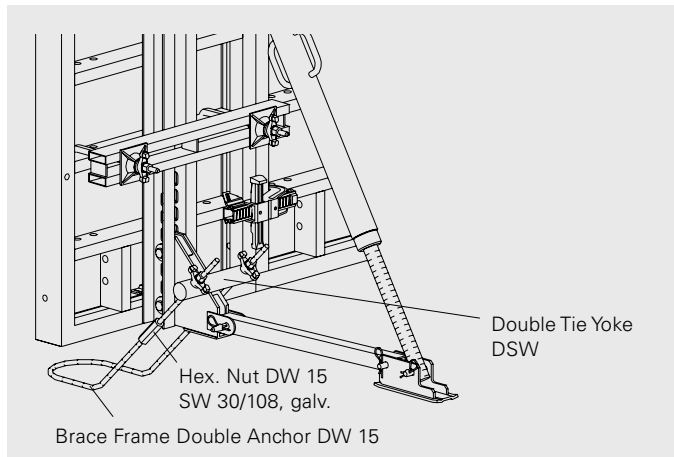
Brace Frame SB-L (Light), SKS

Additional single-sided wall formwork

Brace Frame SB-L (Light)

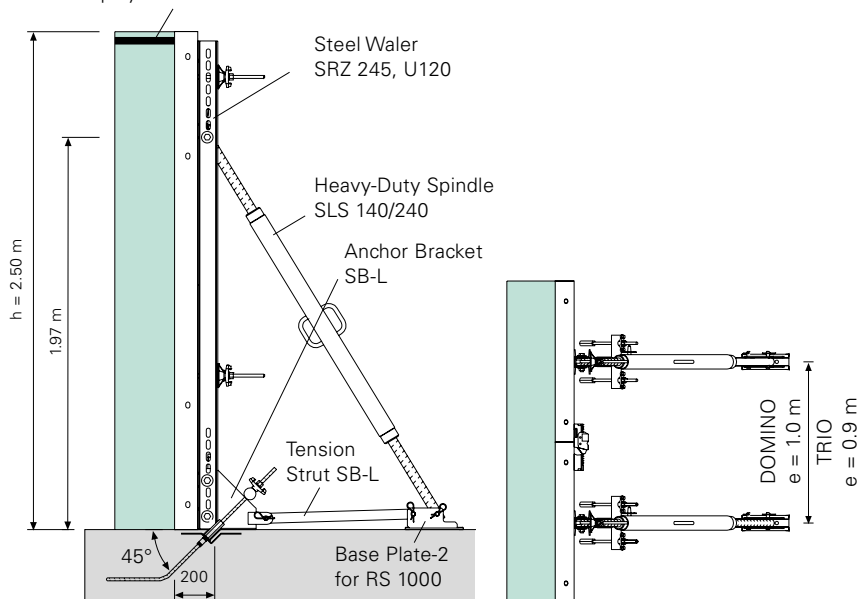
The Brace Frame SB-L has been designed especially for manual forming operations during renovation work or if no crane is available. Assembled from standard components, it allows the construction of single-sided walls with up to 2.70 m concreting heights.

Anchor details with TRIO



Section with DOMINO

Spacer for eliminating any existing pin and thread play.

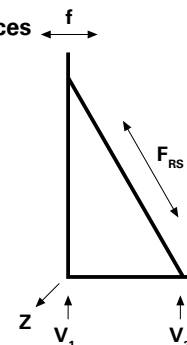


Load tables

Permissible concrete pressure = hydrostatic pressure

	Z [kN]	V ₁ [kN]	V ₂ [kN]	F _{RS} [kN]	f [mm]
DOMINO h = 2.50 m e = 1.00 m	110.0	33.2	42.9	52.0	3
TRIO h = 2.70 m e = 0.90 m	115.0	30.5	49.5	60.0	3

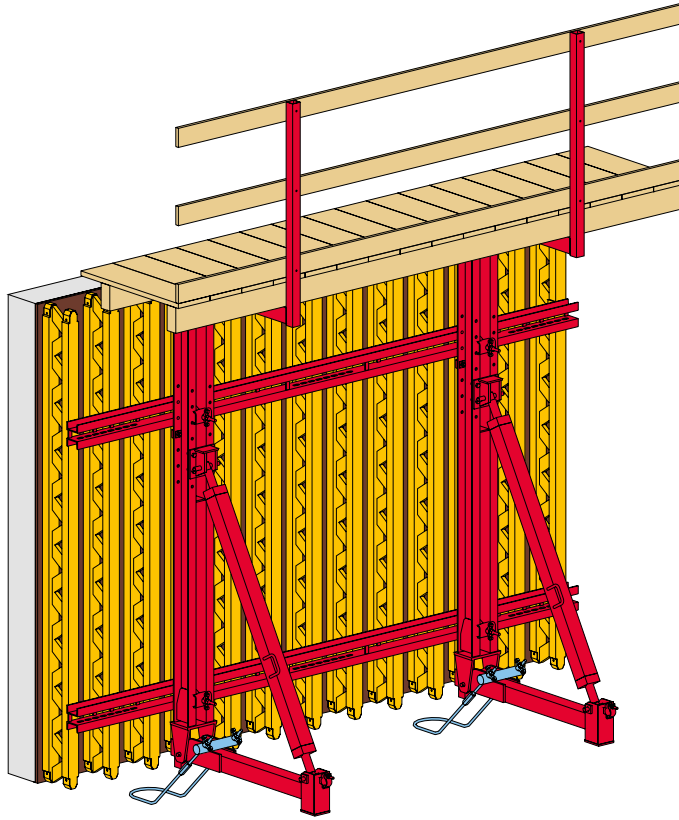
Diagram of forces



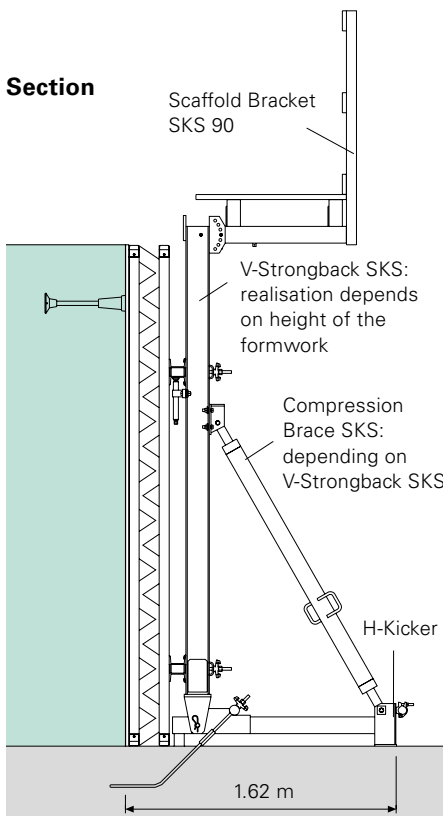
Brace Frame SKS

The first construction phase (Starter) is formed with the Brace Frame SKS, consisting of standard components: V-Strongback and Compression Brace. Only two additional components: H-Kicker SKS and the tension anchorage.

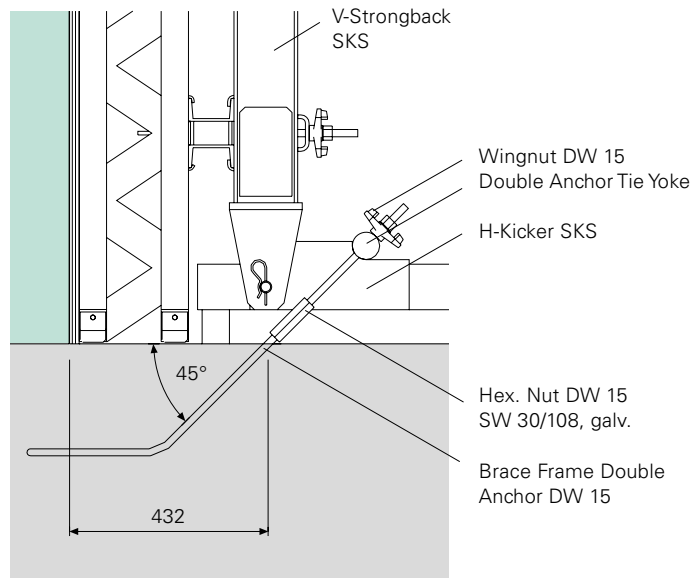
Single-sided forming with brace frames.



Section



Details together with the anchorage



SB Brace Frame

Item no.	Weight kg
025690	412,000

Brace Frame SB-A0

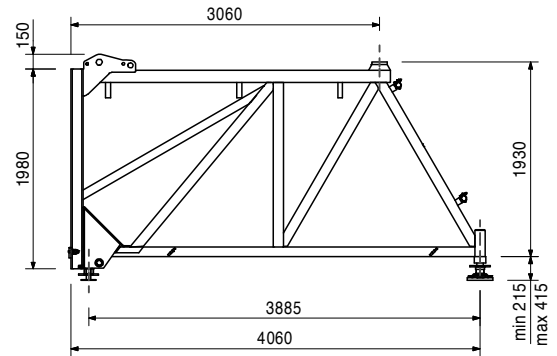
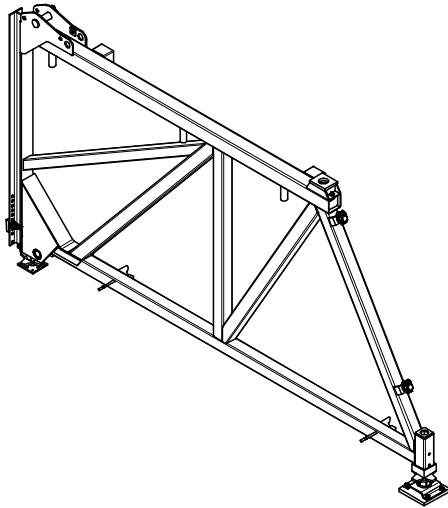
For forming single-sided walls and special applications.

Complete with

- 1 pc. 700555 Rear Base Spindle for SB
- 1 pc. 700554 Adjusting nut
- 1 pc. 025730 Spindle TR 60 x 9/43
- 1 pc. 710545 Bolt Ø 50 x 150, galv.
- 1 pc. 710618 Cotter Pin 8, galv.
- 2 pc. 017040 Screw-On Coupler AK 48, galv.
- 1 pc. 700553 Adapter
- 1 pc. 030130 Cam Nut DW 15, galv.

Technical Data

Load-bearing point, capacity 1.2 t per sling with crane sling angle $\leq 15^\circ$.



027210	3,300
--------	-------

Accessories

Spanner SW 80, for SB

025700	324,000
--------	---------

Brace Frame SB-A

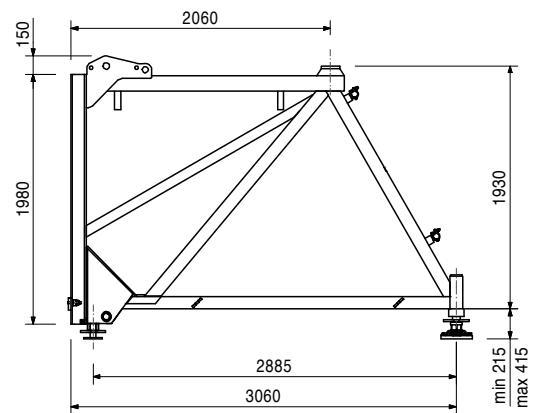
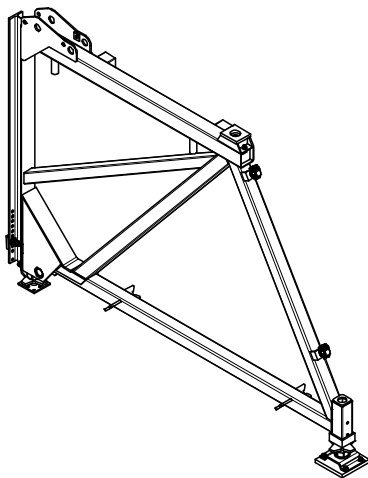
For forming single-sided walls and special applications.

Complete with

- 1 pc. 700555 Rear Base Spindle for SB
- 1 pc. 700554 Adjusting nut
- 1 pc. 025730 Spindle TR 60 x 9/43
- 2 pc. 017040 Screw-On Coupler AK 48, galv.
- 1 pc. 700553 Adapter
- 1 pc. 030130 Cam Nut DW 15, galv.

Technical Data

Load-bearing point, capacity 1.2 t per sling with crane sling angle $\leq 15^\circ$.



027210	3,300
--------	-------

Accessories

Spanner SW 80, for SB

SB Brace Frame



Item no.	Weight kg
025710	276,000

Brace Frame SB-B

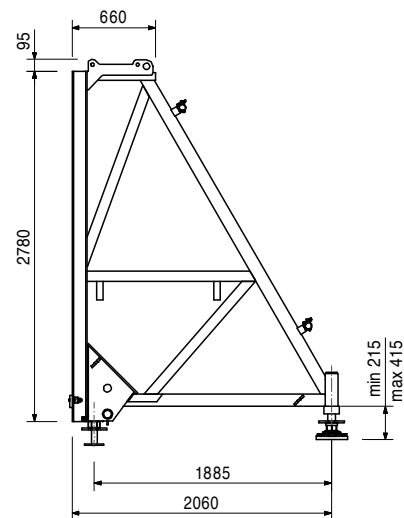
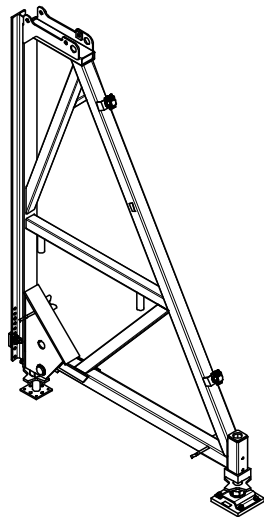
For forming single-sided walls and special applications.

Complete with

- 1 pc. 700555 Rear Base Spindle for SB
- 1 pc. 700554 Adjusting nut
- 1 pc. 025730 Spindle TR 60 x 9/43
- 1 pc. 710545 Bolt Ø 50 x 150, galv.
- 1 pc. 710618 Cotter Pin 8, galv.
- 2 pc. 017040 Screw-On Coupler AK 48, galv.
- 1 pc. 700553 Adapter
- 1 pc. 030130 Cam Nut DW 15, galv.

Technical Data

Load-bearing point, capacity 1.2 t per sling with crane sling angle $\leq 15^\circ$.



027210	3,300
--------	-------

Accessories

Spanner SW 80, for SB

025720	49,900
--------	--------

Brace Frame SB-C

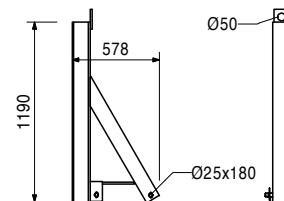
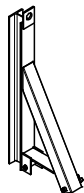
For forming single-sided walls and special applications.

Complete with

- 2 pc. 715936 Pin Ø 25 x 180, incl. dowel pin Ø 6
- 2 pc. 018060 Cotter Pin 4/1, galv.

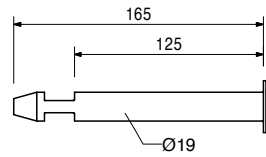
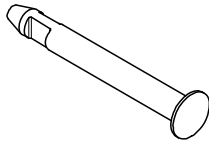
Technical Data

Load-bearing point: capacity
1.5 t with crane sling angle $\leq 15^\circ$,
2.5 t with vertical lift.



Item no.	Weight kg
027690	0,368

Bolt SB-TRIO/DOMINO, galv.
For panel formwork with 12 cm overall thickness.



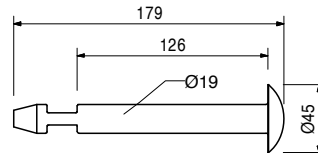
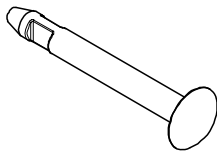
Accessories

114107	1,190
114417	0,273

Sleeve SB-MAXIMO, galv.
Sleeve SB-MAXIMO WDMX

113255	0,414
--------	-------

Bolt SB-MAXIMO, galv.
For connecting MAXIMO elements with Brace Frames SB.



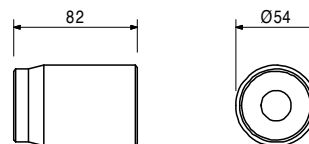
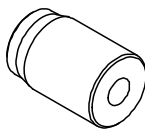
Accessories

114107	1,190
114417	0,273

Sleeve SB-MAXIMO, galv.
Sleeve SB-MAXIMO WDMX

114107	1,190
--------	-------

Sleeve SB-MAXIMO, galv.
For connecting MAXIMO elements to Brace Frames SB.



Note
For use with sealing sleeve MX Ø 16 Art.-No. 112342 and nut sealing sleeve MX Ø 16 Art.-No. 112338.

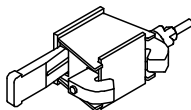
Accessories

113255	0,414
114417	1,400

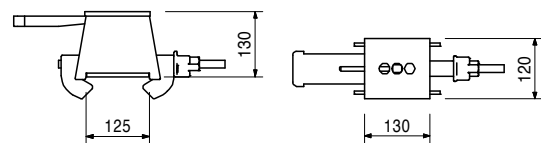
Bolt SB-MAXIMO, galv.
Sleeve SB-MAXIMO WDMX

025740	9,140
--------	-------

Connector SB-A, B, C - MX/TR/D
For connecting MAXIMO, TRIO and DOMINO elements with Brace Frames SB-A0, A, B, C.



Note
1 piece per anchor point.



Accessories

027690	0,368
113255	0,414
114107	1,190
114417	1,400

Bolt SB-TRIO/DOMINO, galv.
Bolt SB-MAXIMO, galv.
Sleeve SB-MAXIMO, galv.
Sleeve SB-MAXIMO WDMX

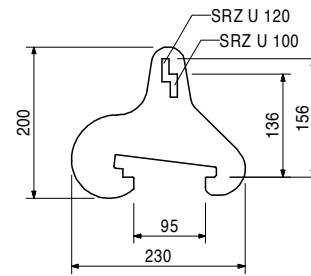
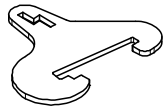
SB Brace Frame



Item no.	Weight kg
025760	1,300

Waler Connector SB-A, B, C

For connecting Steel Walers SRZ and SRU, Profile U100 respectively U120 to SB-A0, A, B, C.



Accessories

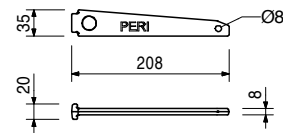
024250	0,331
--------	-------

Wedge K, galv.

024250	0,331
--------	-------

Wedge K, galv.

For Coupling Compression Plate KDP, Wedge Head Piece SRZ/SRU and Waler Connector SB-A, B, C.



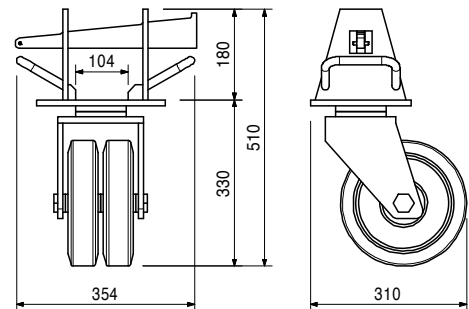
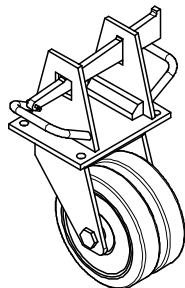
025750	28,700
--------	--------

Guide Roller SB-A, B

For moving SB-A0, SB-A and SB-B brace frame units.

Technical Data

Bearing capacity 1.2 t.



SB Brace Frame



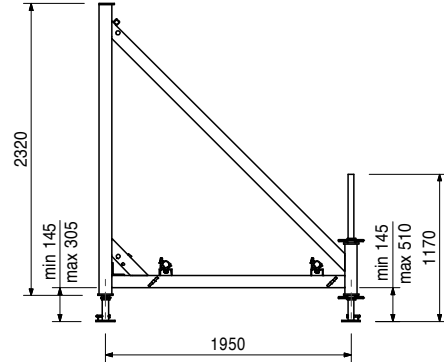
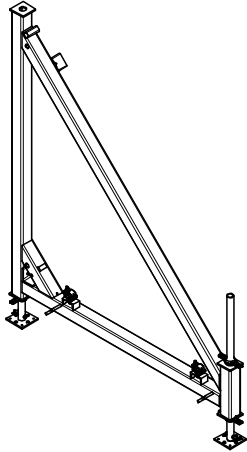
Item no.	Weight kg
027500	136,000

Brace Frame SB-1

For forming single-sided walls and special applications.

Complete with

- 1 pc. 715110 Spindle SB-1, compl.
- 1 pc. 018030 Spindle Tube TR 48-116/80, galv.
- 2 pc. 018270 Quick Jack Nut TR 48, galv.
- 1 pc. 018070 Base Plate for Spindle Tube TR 48
- 1 pc. 018050 Bolt \varnothing 16 x 65/86, galv.
- 1 pc. 018060 Cotter Pin 4/1, galv.
- 1 pc. 770012 Split Pin ISO 8752 8 x 60, galv.
- 2 pc. 017040 Screw-On Coupler AK 48, galv.



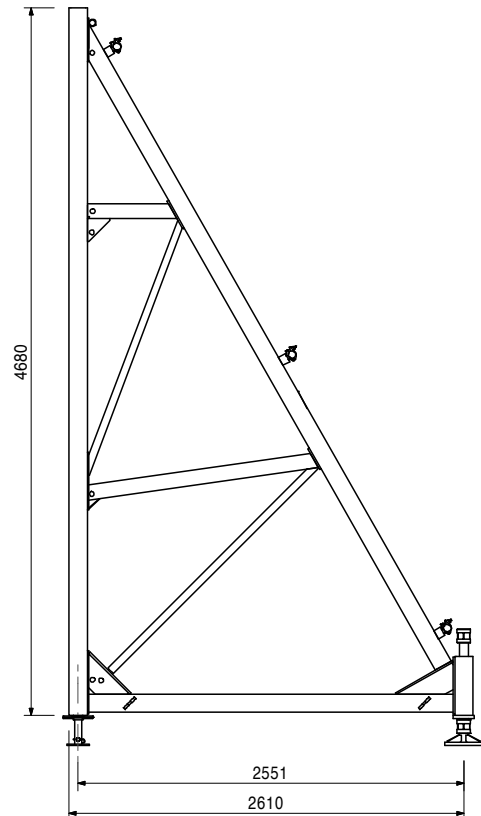
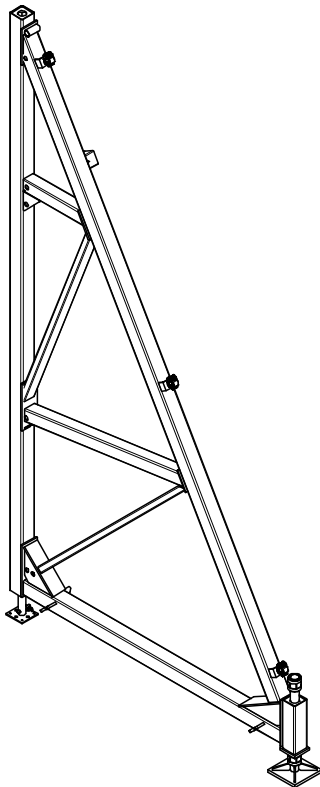
027510	364,000
--------	---------

Brace Frame SB-2

For forming single-sided walls and special applications.

Complete with

- 1 pc. 715121 Adjusting Unit SB-2
- 1 pc. 715110 Spindle SB-1, compl.
- 1 pc. 770012 Split Pin ISO 8752 8 x 60, galv.
- 3 pc. 017040 Screw-On Coupler AK 48, galv.



027210	3,300
--------	-------

Accessories

Spanner SW 80, for SB

SB Brace Frame



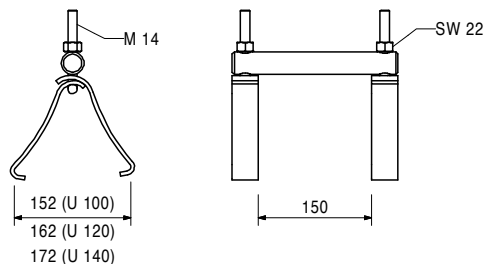
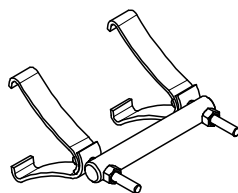
Item no.	Weight kg
027590	2,400

Hook Strap for SB-1, 2, galv.

For fixing Brace Frame SB-1 and SB-2 to Steel Waler SRZ and SRU Profile U100 – U140.

Note

Wrench size SW 22.



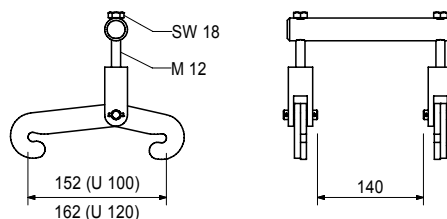
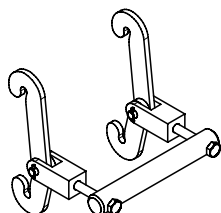
116078	3,970
--------	-------

Hook Strap for SB-2, asymmetric

For fixing Brace Frame SB-2 to Steel Waler SRZ and SRU Profile U100 – U140.

Note

Wrench size SW 18.



027680	49,600
--------	--------

Connector SB-1,2 - MX/TR/D

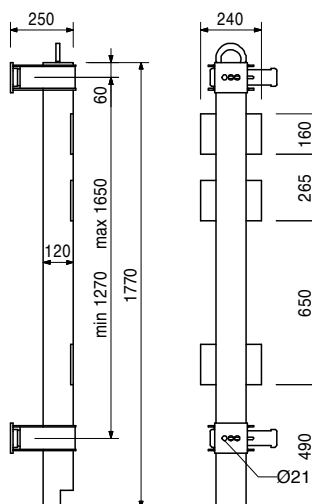
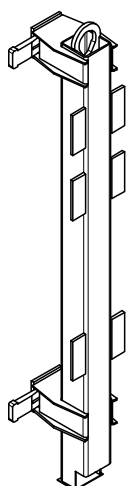
For assembly of Brace Frame SB-1.2 to MAXIMO, TRIO and DOMINO elements.

Note

Brace frame assembly and operating instructions to be adhered to!

Technical Data

Load-bearing point: capacity 1.0 t with crane sling angle $\leq 15^\circ$.



Accessories

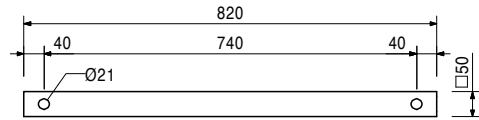
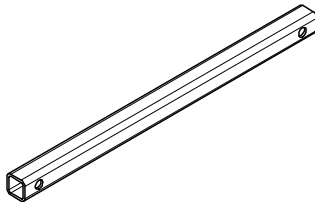
027690	0,368	Bolt SB-TRIO/DOMINO, galv.
027590	2,400	Hook Strap for SB-1, 2, galv.
113255	0,414	Bolt SB-MAXIMO, galv.
114107	1,190	Sleeve SB-MAXIMO, galv.
114417	1,400	Sleeve SB-MAXIMO WDMX

SB Brace Frame



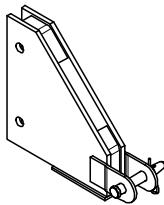
Item no.	Weight kg
100901	5,370

SB-L Tension Strut, l = 740 mm
For Brace Frame SB-L. For forming single-sided walls.



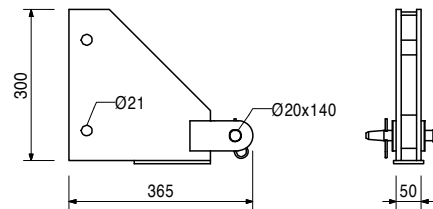
100903	12,000
--------	--------

SB-L Anchor Bracket
For Brace Frame SB-L. For forming single-sided walls.



Complete with

- 1 pc. 105400 Pin Ø 20 x 140, galv.
- 1 pc. 018060 Cotter Pin 4/1, galv.



024910	0,303
710334	0,064
024180	0,126

Accessories

- Bolt ISO 4014 M20 x 100-8.8, galv.**
- Nut ISO 4032 M20-8, galv.**
- Compensation Washer 20, galv.**

010050	51,600
--------	--------

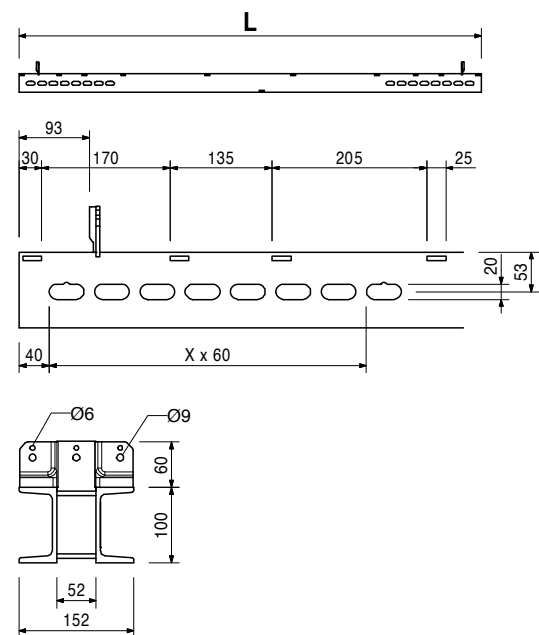
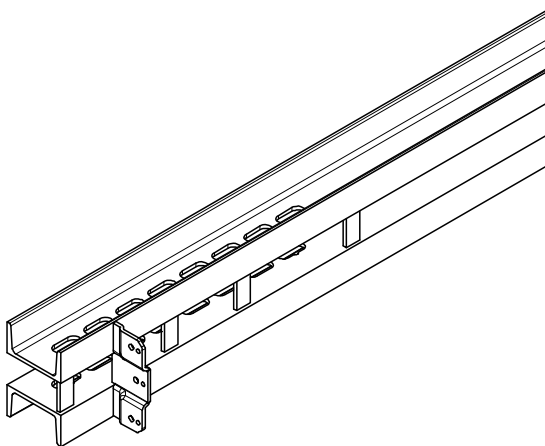
Steel Waler SRZ U-100 l = 2,45 m
Steel waler for VARIO GT 24 panels and special applications.

Note

Special lengths and other profile sizes on request.

Technical Data

Wy = 82.4 cm³, Iy = 412 cm⁴

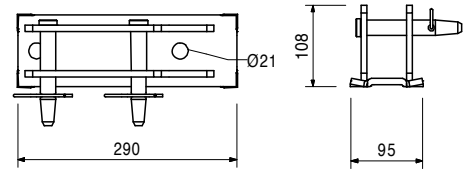
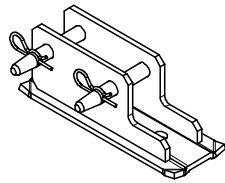


SB Brace Frame

Item no.	Weight kg
102018	4,880

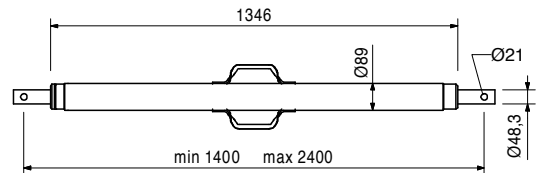
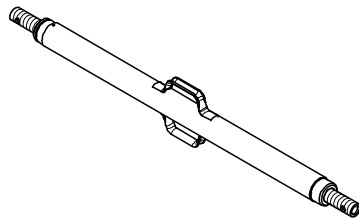
Base Plate-2 for RS 1000/1400, galv.
For assembly of RS 1000/1400 push-pull props.

Complete with
2 pc. 105400 Pin \varnothing 20 x 140, galv.
2 pc. 018060 Cotter Pin 4/1, galv.



101776	24,200
--------	--------

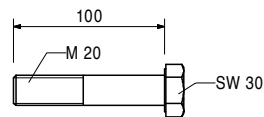
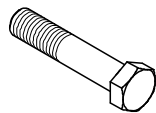
Heavy Duty Spindle SLS 140/240
As adjustable spindle in lattice frameworks with SRU Steel Walers and RCS Climbing Rails.



024910	0,303
--------	-------

Bolt ISO 4014 M20 x 100-8.8, galv.

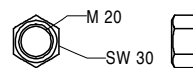
Note
Wrench size SW 30.



710334	0,064
--------	-------

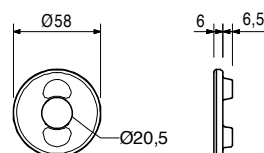
Nut ISO 4032 M20-8, galv.

Note
Wrench size SW 30.



024180	0,126
--------	-------

Compensation Washer 20, galv.

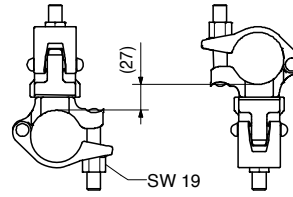
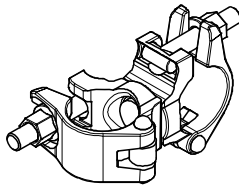


SB Brace Frame

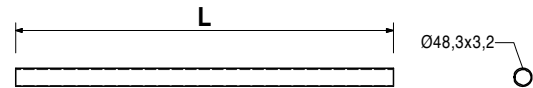
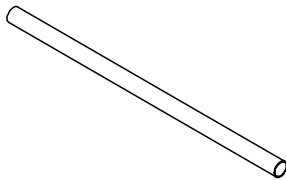
Item no.	Weight kg
017010	1,400

Swivel Coupling DK 48/48, galv.
For Scaffold Tubes Ø 48 mm.

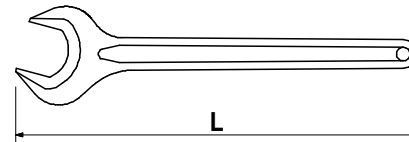
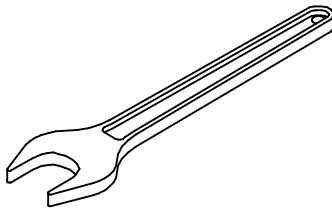
Note
Wrench size SW 19.



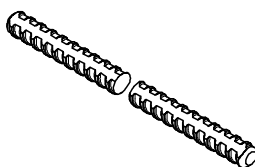
			L
026415	3,550	Scaffold Tubes Steel Ø 48.3 x 3.2	
026417	0,000	Scaff. Tube Steel Ø 48.3 x 3.2, special length	
Cutting Cost Scaffold Tube			
026411	3,550	Scaff. Tube Steel Ø 48.3 x 3.2, l = 1.0 m	1000
026412	7,100	Scaff. Tube Steel Ø 48.3 x 3.2, l = 2.0 m	2000
026413	10,650	Scaff. Tube Steel Ø 48.3 x 3.2, l = 3.0 m	3000
026414	14,200	Scaff. Tube Steel Ø 48.3 x 3.2, l = 4.0 m	4000
026419	17,750	Scaff. Tube Steel Ø 48.3 x 3.2, l = 5.0 m	5000
026418	21,600	Scaff. Tube Steel Ø 48.3 x 3.2, l = 6.0 m	6000



			L
Spanners SW for SB			
027210	3,300	Spanner SW 80, for SB	645
027213	2,300	Spanner SW 70, for SB	570
027211	0,760	Spanner SW 46, for SB	380
For different applications.			



Tie Rods DW 15			
030030	1,440	Tie Rod DW 15 Spec. Length	
030050	0,000	Cutting Cost Tie Rod DW 15, B 15	
030005	0,720	Tie Rod DW 15 l = 0.50 m	
030480	1,440	Tie Rod DW 15 l = 1.00 m	
Note Non-weldable! Take official approval into consideration!			
Technical Data Permissible load 90 kN.			



SB Brace Frame

Item no. Weight kg

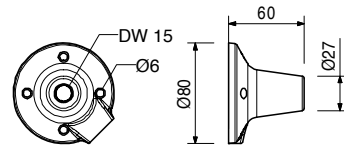
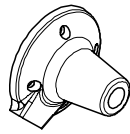
030840 0,516

Threaded Anchor Plate DW 15

For use with Tie Rod DW 15 or B 15. For anchoring in the concrete.

Note

Lost anchor part.



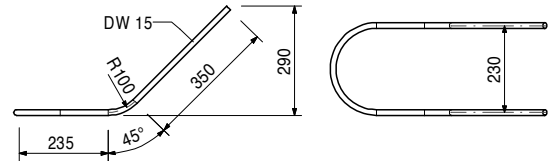
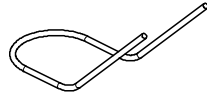
030060 2,130

Brace Frame Double Anchor DW 15

Non-weldable! Take approval into consideration!

Technical Data

Permissible load 2 x 90 kN. Dependent on concrete strength and installation depth.



030090 0,402

Hex. Nut DW 15 SW 30/108, galv.

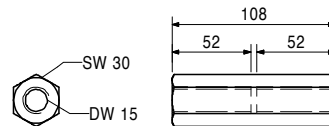
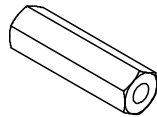
For coupling Tie Rod DW 15 and B 15.

Note

Wrench size SW 30.

Technical Data

Permissible load 90 kN.



030100 0,438

Wingnut DW 15, galv.

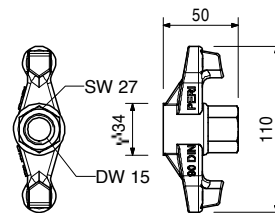
For anchoring with Tie Rod DW 15 and B 15.

Note

Wrench size SW 27.

Technical Data

Permissible load 90 kN.



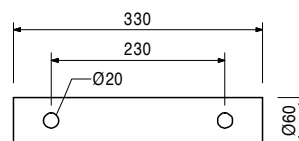
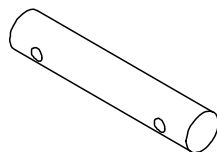
027520 7,030

Double Anchor Tie Yoke DSW

For anchoring with Tie Rod DW 15.

Technical Data

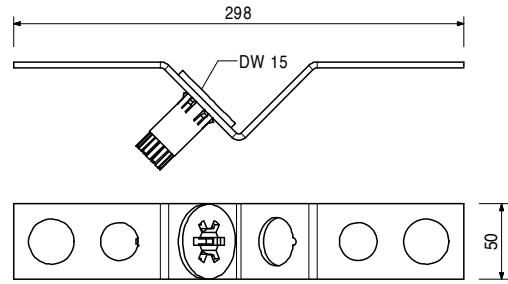
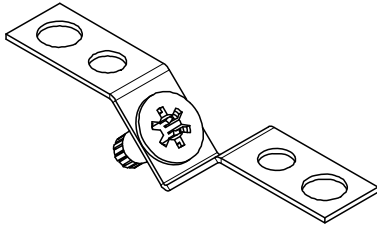
Permissible load 2 x 90 kN.



Item no.	Weight kg
031580	0,440

V-Tie Holder DW 15

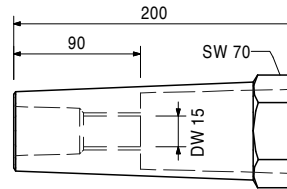
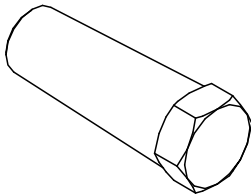
For easy installation of DW 15 Tie Rods at 45° inclinations.



031631	0,345
--------	-------

Leading Anchor Coupler DW 15, compl.

For easy installation of DW 15 Tie Rods at 45° inclinations.



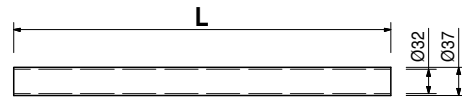
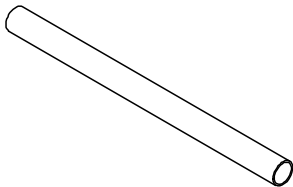
Note

Wrench size SW 70.

031627	0,967
--------	-------

Spacer Tube rough DR 32 l = 3.00 m

Plastic spacer tube for DW 26.



030700	2,560
030800	0,000
030640	1,280
030641	2,560

Tie Rods DW 20

Tie Rod DW 20 Spec. Length

Cutting Cost Tie Rod DW 20/B 20

Tie Rod DW 20 l = 0.50 m

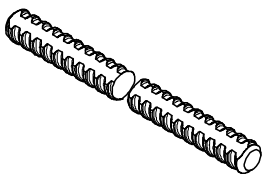
Tie Rod DW 20 l = 1.00 m

Note

Non-weldable! Take official approval into consideration!

Technical Data

Permissible load 150 kN.



Item no. Weight kg

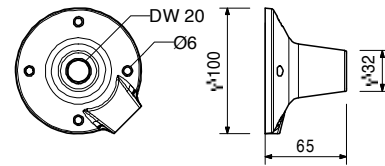
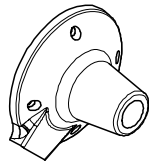
030860 0,801

Threaded Anchor Plate DW 20

For use with Tie Rod DW 20, B 20 or Screw-On Cone-2 M24/DW 20. For anchoring in concrete.

Note

Lost anchor part.



030590 0,685

Hex. Nut DW 20 SW 36/110

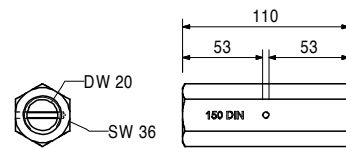
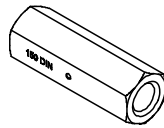
For coupling Tie Rod DW 20 and B 20.

Note

Wrench size SW 36.

Technical Data

Permissible load 150 kN.



030580 0,371

Hex. Nut DW 20 SW 36/60

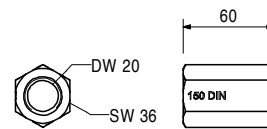
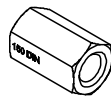
For anchoring with Tie Rod DW 20 and B 20.

Note

Wrench size SW 36.

Technical Data

Permissible load 150 kN.



030990 0,786

Wingnut DW 20, galv.

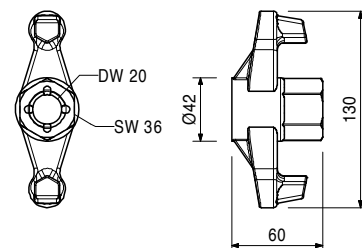
For anchoring with Tie Rod DW 20 and B 20.

Note

Wrench size SW 36.

Technical Data

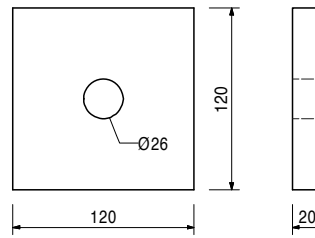
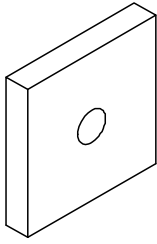
Permissible load 150 kN.



Item no.	Weight kg
030830	2,180

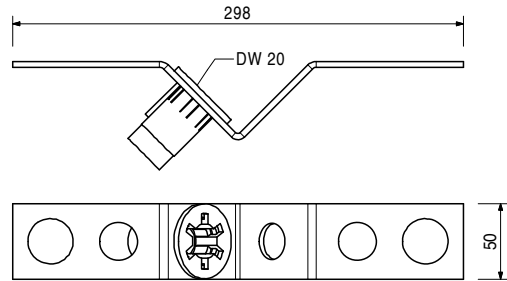
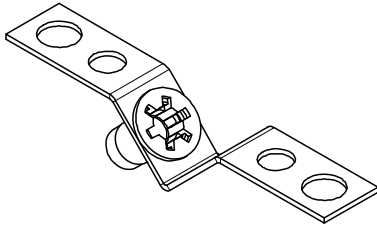
Counterplate DW 20, 120 x 120 x 20
For anchoring with Tie Rod DW 20 and B 20.

Technical Data
Permissible load 150 kN.



031590	0,420
--------	-------

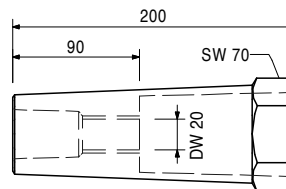
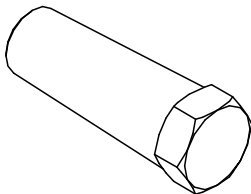
V-Tie Holder DW 20
For easy installation of DW 20 Tie Rods at 45° inclinations.



031632	0,355
--------	-------

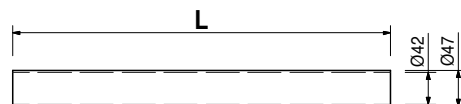
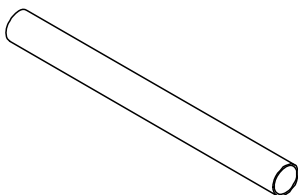
Leading Anchor Coupler DW 20, compl.
For easy installation of DW 20 Tie Rods at 45° inclinations.

Note
Wrench size SW 70.



031634	1,250
--------	-------

Spacer Tube rough DR 42 l = 3.00 m
Plastic spacer tube for DW 20, 26.



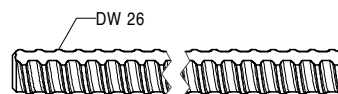
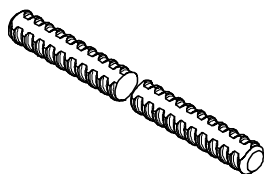
SB Brace Frame



Item no.	Weight kg
030340	4,480
030500	0,000
030645	2,240
030646	4,480

Tie Rods DW 26
Tie Rod DW 26 Spec. Length
Cutting Cost Tie Rod DW 26
Tie Rod DW 26 l = 0.50 m
Tie Rod DW 26 l = 1.00 m

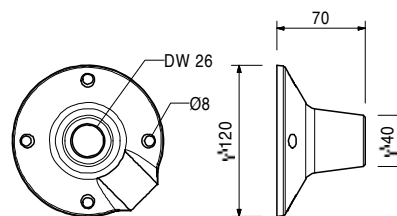
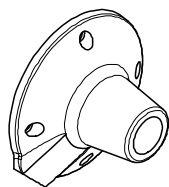
Note
 Non-weldable! Take official approval into consideration!
Technical Data
 Permissible load 250 kN.



030870	1,240
--------	-------

Threaded Anchor Plate DW 26
 For use with Tie Rod DW 26 or Screw-On Cone M36 / DW 26. For anchoring in the concrete.

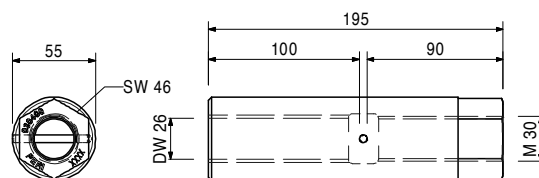
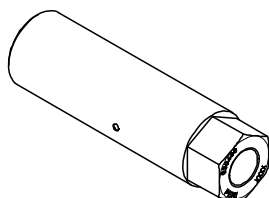
Note
 Lost anchor part.



030400	2,620
--------	-------

Coupling Nut M 30/DW 26, galv.
 For coupling Tension Rod and Tie Rod DW 26.

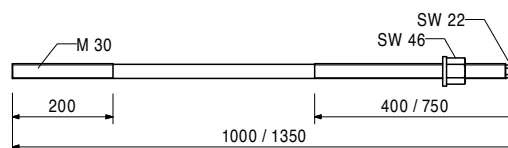
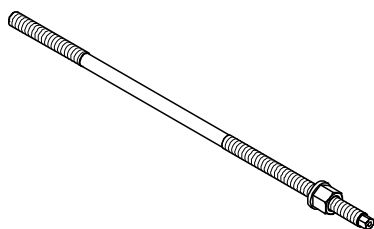
Note
 Wrench size SW 46.
Technical Data
 Permissible load 250 kN.



027540	5,170
027230	6,810

Tension Rods M30 with Nut
Tension Rod with Nut 100/M30
Tension Rod with Nut 135/M30
 For anchoring the Brace Frame SB.

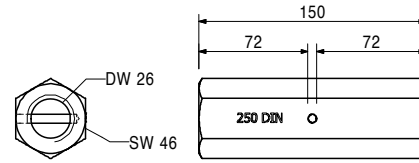
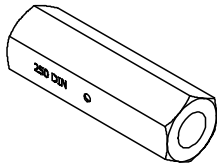
Note
 Wrench size SW 46 and SW 22.
Technical Data
 Permissible load 250 kN.



Item no.	Weight kg
030980	1,540

Hex. Coupler DW 26 SW 46/150, weldable
For coupling Tie Rod DW 26.

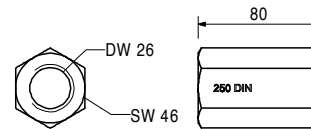
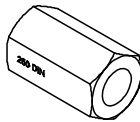
Note
Weldable! Wrench size SW 46.
Technical Data
Permissible load 250 kN.



030970	0,800
--------	-------

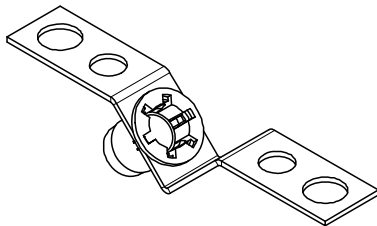
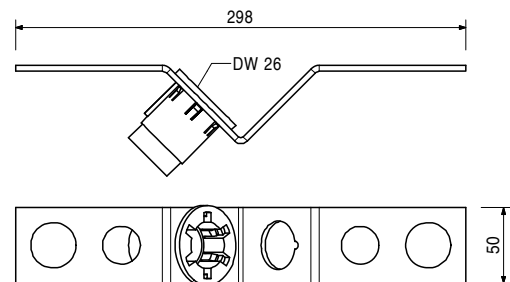
Hex. Coupler DW 26 SW 46/80, weldable
For anchoring with Tie Rod DW 26.

Note
Weldable! Wrench size SW 46.
Technical Data
Permissible load 250 kN.



031600	0,430
--------	-------

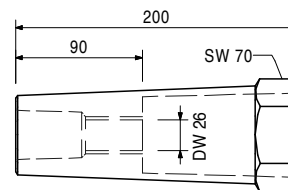
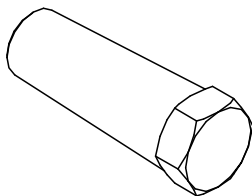
V-Tie Holder DW 26
For easy installation of DW 26 Tie Rods at 45° inclinations.



031633	0,365
--------	-------

Leading Anchor Coupler DW 26, compl.
For easy installation of DW 26 Tie Rods at 45° inclinations.

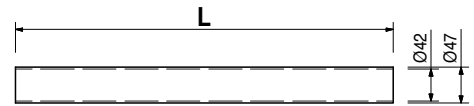
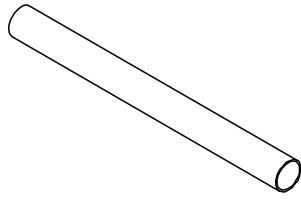
Note
Wrench size SW 70.



SB Brace Frame

Item no.	Weight kg
031634	1,250

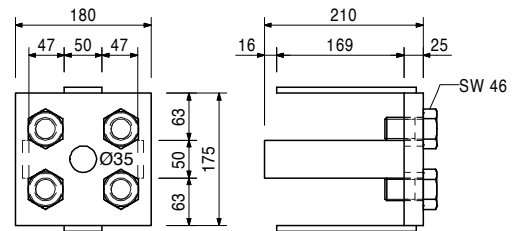
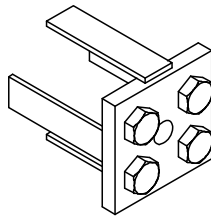
Spacer Tube rough DR 42 l = 3.00 m
Plastic spacer tube for DW 20, 26.



101621	10,100
--------	--------

Tension Release Plate SB DW 26
For anchoring the Brace Frame SB. Allows easy release of higher tensile loads. In connection with Anchor Waler 55 or 235. Turn bolt to working position before shuttering.

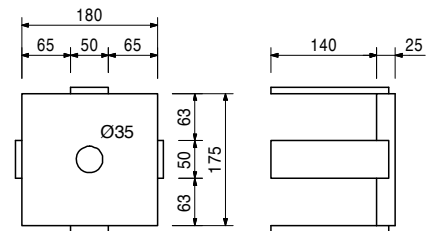
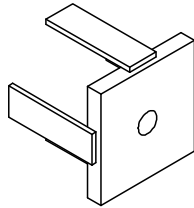
Note
Wrench size SW 46.
Technical Data
Permissible load 250 kN.



027480	7,960
--------	-------

Anchor Plate SB - DW 26
For anchoring of Brace Frame SB.

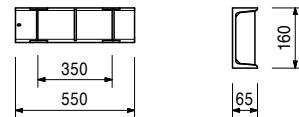
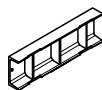
Technical Data
Permissible load 250 kN.



109017	11,600
--------	--------

Anchor Waler U160 l = 0.55 m
For anchoring of Brace Frame SB.

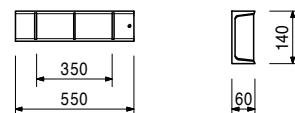
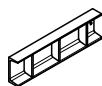
Technical Data
Permissible load 2 x 250 kN.



027650	9,940
--------	-------

Anchor Waler U140 l = 0.55 m
For anchoring of Brace Frame SB.

Technical Data
Permissible load 2 x 135 kN.



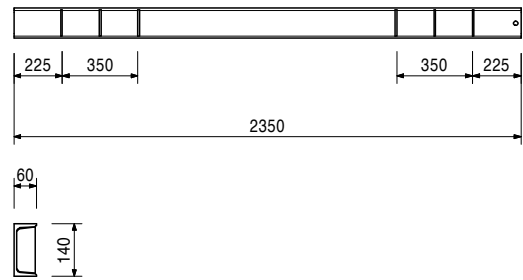
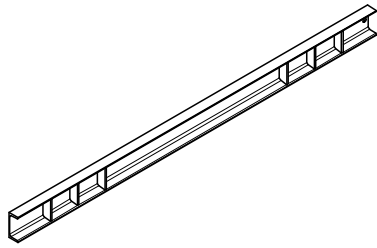
SB Brace Frame



Item no.	Weight kg
027530	39,800

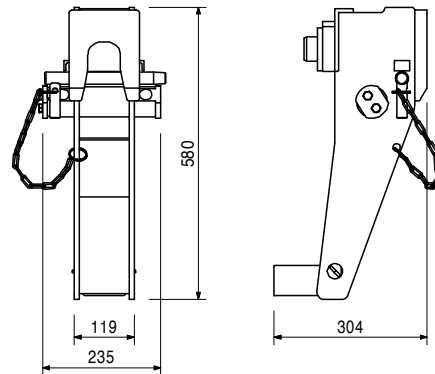
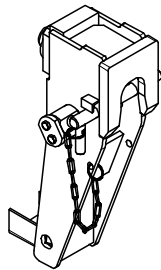
Anchor Waler U140 I = 2.35 m
For anchoring the Brace Frame SB.

Technical Data
Permissible load 2 x 135 kN.



106661	32,000
--------	--------

Brace Frame Wall Scaffold Hinge
For horizontal use of PERI Brace Frames SB-A0, A, B and SB-2 as climbing brackets.



Accessories

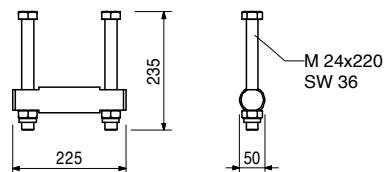
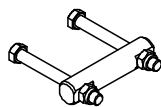
106662	4,870
106663	13,900

Brace Frame Adaptor SB A0, A, B
Brace Frame Adaptor SB-2

106662	4,870
--------	-------

Brace Frame Adaptor SB A0, A, B
For mounting the brace frame wall scaffold hinge to the Brace Frame SB-A0, A or B

Complete with
2 pc. 106803 Nuts ISO 7042 M24-10, galv.
2 pc. 106797 Bolt ISO 4014 M24 x 220-10.9, galv.
Note
Wrench size SW 36.



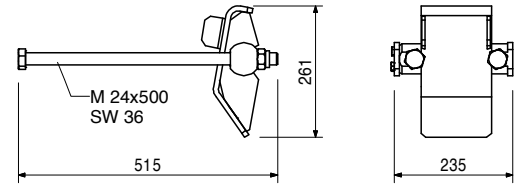
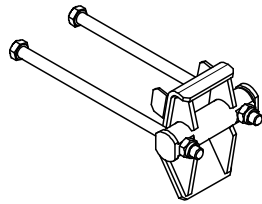
SB Brace Frame

Item no.	Weight kg
106663	13,900

Brace Frame Adaptor SB-2
 For mounting of Brace Frame Wall Scaffold Hinge to the Brace Frame SB-2.

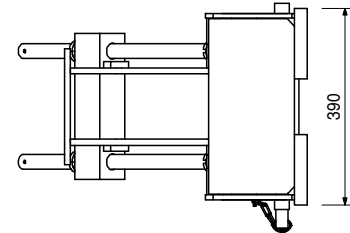
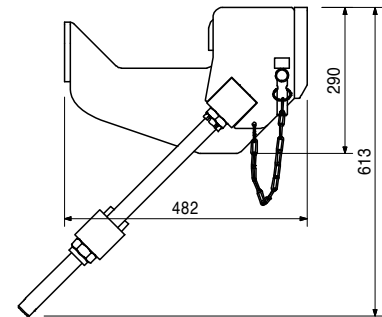
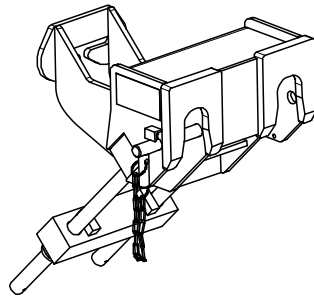
Complete with
 2 pc. 106798 Bolt ISO 4014 M24 x 500-10,9, galv.
 2 pc. 106803 Nuts ISO 7042 M24-10, galv.

Note
 Wrench size SW 36.



111866	64,600
--------	--------

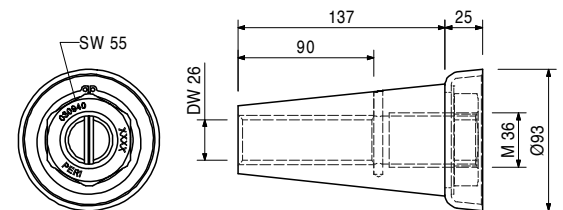
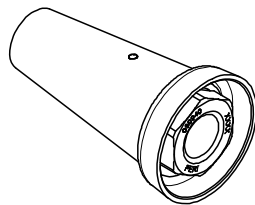
Wall Scaffold Hinge SB double
 For horizontal use of PERI Brace Frames SB-A0, A, B as climbing brackets.



030940	3,040
--------	-------

Climbing Cone-2 M 36/DW 26, galv.
 Tie System M36.
 For anchoring of climbing systems.

Note
 Wrench size SW 55.



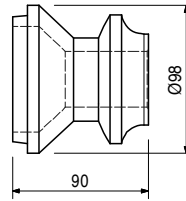
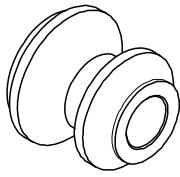
Accessories

030870	1,240
030340	4,480

Threaded Anchor Plate DW 26
Tie Rod DW 26 Spec. Length

Item no.	Weight kg
029490	1,770

Scaffold Mounting Ring M36, galv.
Tie System M36.
For anchoring of climbing systems.



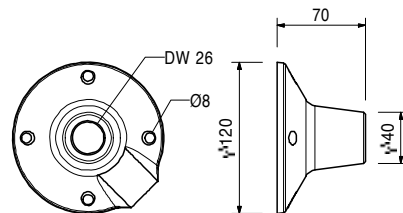
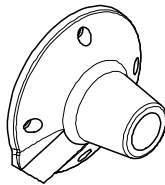
029550	1,400
--------	-------

Accessories
Bolt ISO 4014 M36 x 130-10.9, galv.

030870	1,240
--------	-------

Threaded Anchor Plate DW 26
For use with Tie Rod DW 26 or Screw-On Cone M36 / DW 26. For anchoring in the concrete.

Note
Lost anchor part.

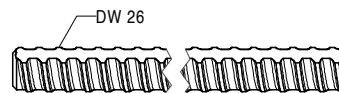
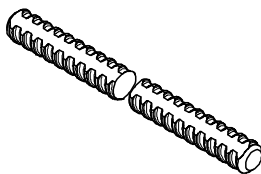


030340	4,480
030500	0,000

Tie Rod DW 26
Tie Rod DW 26 Spec. Length
Cutting Cost Tie Rod DW 26

Note
Non-weldable! Take official approval into consideration!

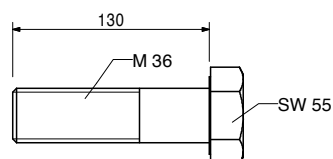
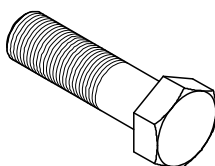
Technical Data
Permissible load 250 kN.



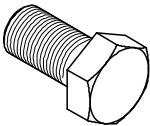
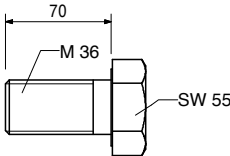
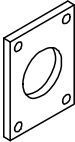
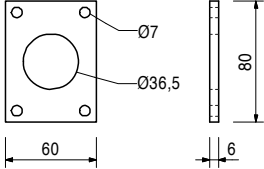
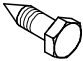
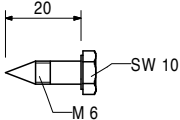

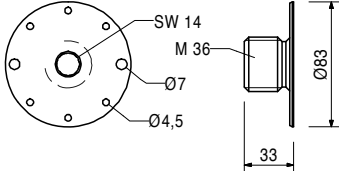

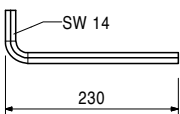
029550	1,400
--------	-------

Bolt ISO 4014 M36 x 130-10.9, galv.
High-strength bolts for anchoring of climbing systems.

Note
Wrench size SW 55.



SB Brace Frame

Item no.	Weight kg		
029430	0,930	<p>Bolt ISO 4017 M36 x 70-8.8, galv. Bolt for anchoring of climbing systems and as advancing bolt.</p> 	<p>Note Wrench size SW 55.</p> 
029390	0,170	<p>Anchor Positioning Plate M36, galv. For fixing the M36 anchor system if the plywood formlining is drilled through.</p> 	
		Accessories	
029440	0,005	<p>Lag Screw DIN 571 6 x 20, galv.</p>	
029440	0,005	<p>Lag Screw DIN 571 6 x 20, galv.</p> 	<p>Note Wrench size SW 10.</p> 
026460	0,308	<p>Anchor Positioning Stud M36, galv. For fixing the M36 anchor system if the plywood formlining is not drilled through.</p> 	<p>Note Wrench size SW 14.</p> 
		Accessories	
027212	0,445	<p>Allen Key SW 14, long</p>	
710312	0,005	<p>Nail 3 x 80</p>	
027212	0,445	<p>Allen Key SW 14, long Fits to PERI Anchor Positioning Stud and Allen key bolts M16.</p> 	



01 Germany
PERI GmbH
 Rudolf-Diesel-Strasse 19
 89264 Weissenhorn
 info@peri.com
 www.peri.com



02 France
 PERI S.A.S.
 77109 Meaux Cedex
 peri.sas@peri.fr
 www.peri.fr

03 Switzerland
 PERI AG
 8472 Ohringen
 info@peri.ch
 www.peri.ch

04 Spain
 PERI S.A.U.
 28110 Algete - Madrid
 info@peri.es
 www.peri.es

05 Belgium/Luxembourg
 N.V. PERI S.A.
 1840 Londerzeel
 info@peri.be
 www.peri.be

06 Netherlands
 PERI Holding B.V.
 5480 AH-Schijndel
 info@peri.nl
 www.peri.nl

07 USA
 PERI Formwork Systems, Inc.
 Elkridge, MD 21075
 info@peri-usa.com
 www.peri-usa.com

08 Indonesia
 PT Beton Perkasa Wijaksana
 Jakarta 10210
 bpw@betonperkasa.com
 www.peri.com

09 Italy
 PERI S.p.A.
 20060 Basiano
 info@peri.it
 www.peri.it

10 Japan
 PERI Japan K.K.
 Tokyo 103-0015
 info@perijapan.jp
 www.perijapan.jp

11 United Kingdom/Ireland
 PERI Ltd.
 Rugby, CV23 0AN
 info@peri.ltd.uk
 www.peri.ltd.uk

12 Turkey
 PERI Kalip ve Iskeleleri Sanayi
 ve Ticaret Ltd.
 Esenyurt / Istanbul 34510
 info@peri.com.tr
 www.peri.com.tr

13 Hungary
 PERI Kft.
 1181 Budapest
 info@peri.hu
 www.peri.hu

14 Malaysia
 PERI Formwork Malaysia Sdn. Bhd.
 43300 Seri Kembangan,
 Selangor Darul Ehsan
 info@perimalaysia.com
 www.perimalaysia.com

15 Singapore
 PERI Asia Pte Ltd
 Singapore 387355
 pha@periasia.com
 www.periasia.com

16 Austria
 PERI Ges.mbh
 3134 Nußdorf ob der Traisen
 office@peri.at
 www.peri.at

17 Czech Republic
 PERI spol. S r.o.
 252 42 Jesenice u Prahy
 info@peri.cz
 www.peri.cz

18 Denmark
 PERI Danmark A/S
 2670 Greve
 peri@peri.dk
 www.peri.dk

19 Finland
 PERI Suomi Ltd. Oy
 05460 Hyvinkää
 info@perisuomi.fi
 www.perisuomi.fi

20 Norway
 PERI Norge AS
 3036 Drammen
 info@peri.no
 www.peri.no

21 Poland
 PERI Polska Sp. z o.o.
 05-860 Plochocin
 info@peri.com.pl
 www.peri.com.pl

22 Sweden
 PERIform Sverige AB
 30262 Halmstad
 peri@periform.se
 www.periform.se

23 Korea
 PERI (Korea) Ltd.
 Seoul 135-936
 info@perikorea.com
 www.perikorea.com

24 Portugal
 Pericofragens Lda.
 2790-326 Queijas
 info@peri.pt
 www.peri.pt

25 Argentina
 PERI S.A.
 B1625GPA Escobar – Bs. As.
 info@peri.com.ar
 www.peri.com.ar

26 Brazil
 PERI Formas e
 Escoramentos Ltda.
 Vargem Grande Paulista – SP
 info@peribrasil.com.br
 www.peribrasil.com.br

27 Chile
 PERI Chile Ltda.
 Colina, Santiago de Chile
 perichile@peri.cl
 www.peri.cl

28 Romania
 PERI România SRL
 077015 Balotești
 info@peri.ro
 www.peri.ro

29 Slovenia
 PERI Agency
 2000 Maribor
 peri.slo@triera.net
 www.peri.com

30 Slovakia
 PERI spol. s. r.o.
 903 01 Senec
 info@peri.sk
 www.peri.sk

31 Australia
 PERI Australia Pty. Ltd.
 Glendenning NSW 2761
 info@periaus.com.au
 www.periaus.com.au

32 Estonia
 PERI AS
 76406 Saku vald
 Harjumaa
 peri@peri.ee
 www.peri.ee

33 Greece
 PERI Hellas Solely Owned Ltd.
 194 00 Koropi
 info@perihellas.gr
 www.perihellas.gr

34 Latvia
 PERI SIA
 2118 Salaspils novads, Rigas rajons
 info@peri-latvija.lv
 www.peri-latvija.lv

35 United Arab Emirates
 PERI (L.L.C.)
 Bolton, ON – L7E 1K1
 perillc@perime.com
 www.perime.com

36 Canada
 PERI Formwork Systems, Inc.
 Bolton, ON – L7E 1K1
 info@peri.ca
 www.peri.ca



- | | | | | |
|---|---|---|--|--|
| <p>37 Lebanon
PERI Representative Office
90416 – Jdeideh
lebanon@peri.de
www.peri.com</p> | <p>44 Russian Federation
OOO PERI
142407, Noginsk District
moscow@peri.ru
www.peri.ru</p> | <p>51 Turkmenistan
PERI Kalıp ve İskeleleri
Aşgabat
ahmet.kadioglu@peri.com.tr
www.peri.com.tr</p> | <p>57 Saudi Arabia
PERI Saudi Arabia Ltd.
21463 Jeddah
info@peri.com.sa
www.peri.com.sa</p> | <p>64 Nigeria
PERI Nigeria Ltd.
Lagos
info@peri.ng
www.peri.ng</p> |
| <p>38 Lithuania
PERI UAB
02300 Vilnius
info@peri.lt
www.peri.lt</p> | <p>45 South Africa
PERI (Pty) Ltd
7600 Stellenbosch
info@peri.co.za
www.peri.co.za</p> | <p>52 Belorussia
IOOO PERI Belarus
220100 Minsk
info@peri.by
www.peri.by</p> | <p>58 Qatar
PERI Qatar LLC
P.O.Box: 31295 - Doha
info@periqatar.com
www.peri.qa</p> | <p>65 Oman
PERI (L.L.C.)
Muscat
perimct@perime.com
www.perime.com</p> |
| <p>39 Morocco
PERI S.A.U.
Tanger
info@peri.ma
www.peri.ma</p> | <p>46 Ukraine
PERI Ukraina
07400 Brovary
peri@peri.ua
www.peri.ua</p> | <p>53 Croatia
PERI oplate i skele d.o.o.
10 250 Lučko-Zagreb
info@peri.com.hr
www.peri.com.hr</p> | <p>59 Algeria
SarI PERI
Kouba 16092, Alger
info@peri.com
www.peri.com</p> | <p>66 Colombia
PERI S.A.S. Colombia
Briceño, Cundinamarca
peri.colombia@peri.com.co
www.peri.com.co</p> |
| <p>40 Israel
PERI Formwork
Engineering Ltd.
Rosh Ha'ayin, 48104
info@peri.co.il
www.peri.co.il</p> | <p>47 Egypt
Egypt Branch Office
11341 Nasr City /Cairo
info@peri.com.eg
www.peri.com.eg</p> | <p>54 India
PERI (India) Pvt Ltd
Mumbai – 400064
info@peri.in
www.peri.in</p> | <p>60 Albania
PERI formwork and
scaffolding Sh.p.k.
Tirane
erti.hasanaj@peri.com.tr
www.peri.com.tr</p> | |
| <p>41 Bulgaria
PERI Bulgaria EOOD
1839 Sofia
peri.bulgaria@peri.bg
www.peri.bg</p> | <p>48 Serbia
PERI – Oplate d.o.o.
22310 Šimanovci
office@peri.rs
www.peri.rs</p> | <p>55 Jordan
PERI GmbH - Jordan
11947 Amman
jordan@peri.com
www.peri.com</p> | <p>61 Peru
PERI Peruana S.A.C.
Villa El Salvador, Lima
contacto@peri.com.pe
www.peri.com.pe</p> | |
| <p>42 Iceland
Armar ehf.
220 Hafnarfjörður
armar@armar.is
www.armar.is</p> | <p>49 Mexico
PERI Cimbras y Andamios,
S.A. de C.V.
Estado de México, Huehuetoca
info@peri.com.mx
www.peri.com.mx</p> | <p>56 Kuwait
PERI Kuwait WLL
13011 Kuwait
info@peri.com.kw
www.peri.com.kw</p> | <p>62 Panama
PERI Panama Inc.
0832-00155 Panama City
info@peri.com.pa
www.peri.com.pa</p> | |
| <p>43 Kazakhstan
TOO PERI Kazakhstan
050000 Almaty
peri@peri.kz
www.peri.kz</p> | <p>50 Azerbaijan
PERI Representative Office
Baku
peribaku@peri.com.tr
www.peri.com.tr</p> | <p>63 Angola
Pericofragens, Lda.
Luanda
renato.portugal@peri.pt
www.peri.pt</p> | | |

The optimal System for every Project and every Requirement



Wall Formwork



Column Formwork



Slab Formwork



Climbing Systems



Tunnel Formwork



Bridge Formwork



Shoring Systems



Construction Scaffold



Facade Scaffold



Industrial Scaffold



Access



Protection Scaffold



System-Independent Accessories



Services



PERI GmbH
Formwork Scaffolding Engineering
 Rudolf-Diesel-Strasse 19
 89264 Weissenhorn
 Germany
 Tel. +49 (0)7309.950-0
 Fax +49 (0)7309.951-0
 info@peri.com
 www.peri.com